

Amoco 3D-Land

Robert G. Clapp¹

ABSTRACT

Amoco 3D-Land dataset

AMOCO GOM DATA

Raw Data tape

Velocity Model Unknown

Stack /data_3d/amoco-3dland/stack.H

Usage Lumley

Geometry

```
***** amoco_sort.H *****
4 -esize          Synched          data_format-xdr_float
-----
n1=1000           o1=0.000000       d1=0.002000     label1=time
n2=606097        o2=1.000000       d2=1.000000     label2=trace_number
Data: in=/data_3d/amoco-3dland/amoco_sort.H@
      606097 elements, 2424388000 bytes in data file
-----
keynumber=1      keytype=scalar_int   keyname=sx
keynumber=2      keytype=scalar_int   keyname=sy
keynumber=3      keytype=scalar_int   keyname=gx
keynumber=4      keytype=scalar_int   keyname=gy
keynumber=5      keytype=scalar_int   keyname=cdp
keynumber=6      keytype=scalar_int   keyname=offset
keynumber=7      keytype=scalar_int   keyname=sstat
keynumber=8      keytype=scalar_int   keyname=gstat
keynumber=9      keytype=scalar_float keyname=s_x
keynumber=10     keytype=scalar_float keyname=g_x
keynumber=11     keytype=scalar_float keyname=s_y
keynumber=12     keytype=scalar_float keyname=g_y
keynumber=13     keytype=scalar_float keyname=cmp_x
keynumber=14     keytype=scalar_float keyname=cmp_y
```

¹email: bob@sep.stanford.edu

```

keynumber=15      keytype=scalar_float   keyname=offset_x
keynumber=16      keytype=scalar_float   keyname=offset_y
keynumber=17      keytype=scalar_float   keyname=aoffset
keynumber=18      keytype=scalar_float   keyname=azimuth
keynumber=19      keytype=scalar_int     keyname=data_record_number
n2=606097         o2=1.000000      d2=1.000000      label2=trace_number
Headers in=/data_3d/amoco-3dland/amoco_sort.H@@@
  11515843 elements,   46063372 bytes in data file
-----
grid axis2        n2=7      o2=1.000000      d2=1.000000      label2=trace_in_bin
grid axis3        n3=45     o3=-330.000000      d3=100.000000   label3=cmp_x
grid axis4        n4=63     o4=500.000000      d4=100.000000   label4=cmp_y
grid axis5        n5=9      o5=-400.000000      d5=100.000000   label5=offset_xgrid axis6
5800.000000      d6=100.000000   label6=offset_y
Grid in=/data_3d/amoco-3dland/amoco_sort.H@@@@@
  20896785 elements,   83587140 bytes in data file
-----
-----

```

Problem**History of Data** ??????? **Preprocessing** ???????**Proprietary Considerations** ???????**REFERENCES**

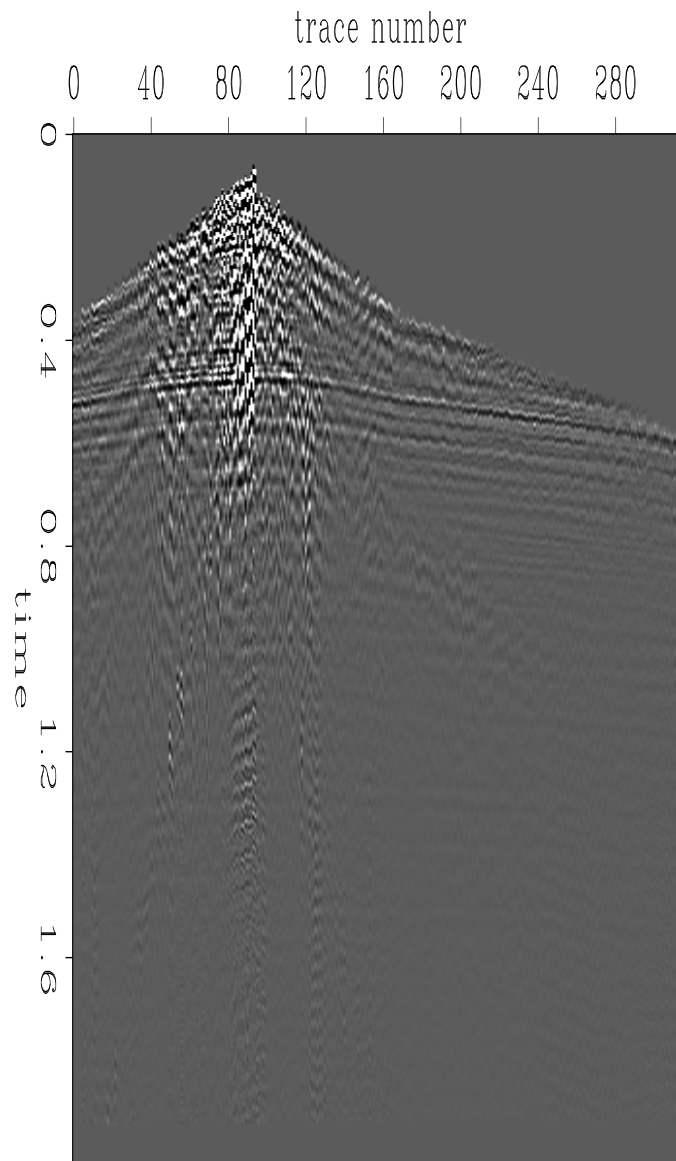


Figure 1: CMP gather `amoco-3dland-cmp` [ER]

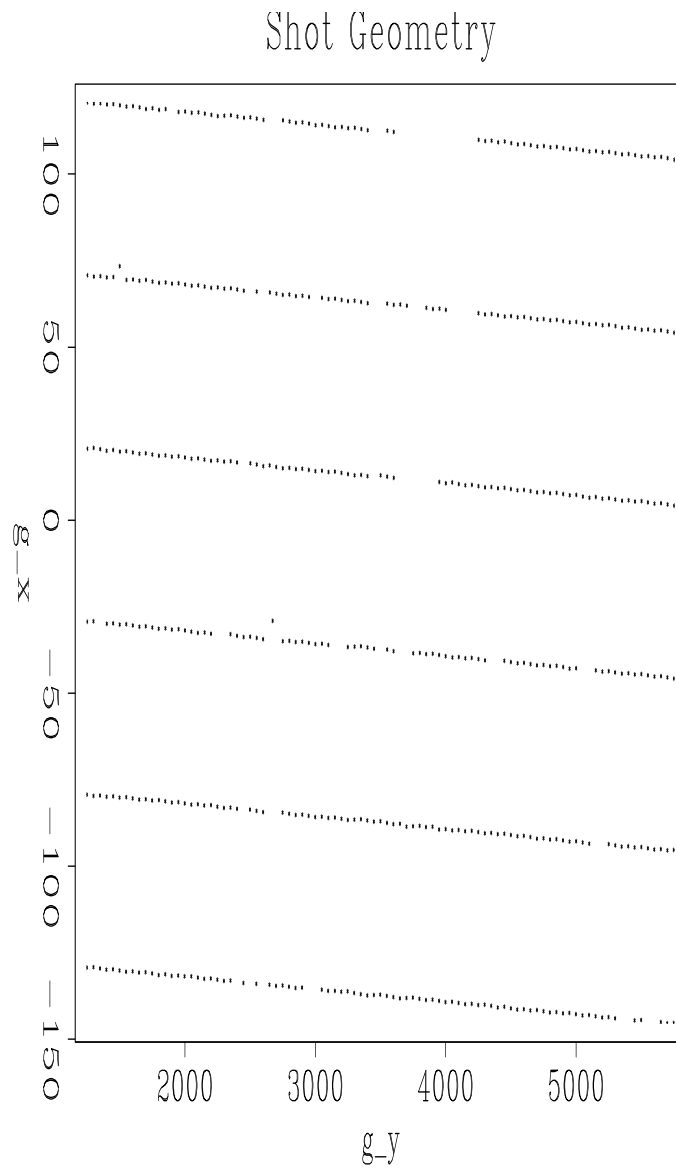


Figure 2: Shot geometry `amoco-3dland-shot` [ER]

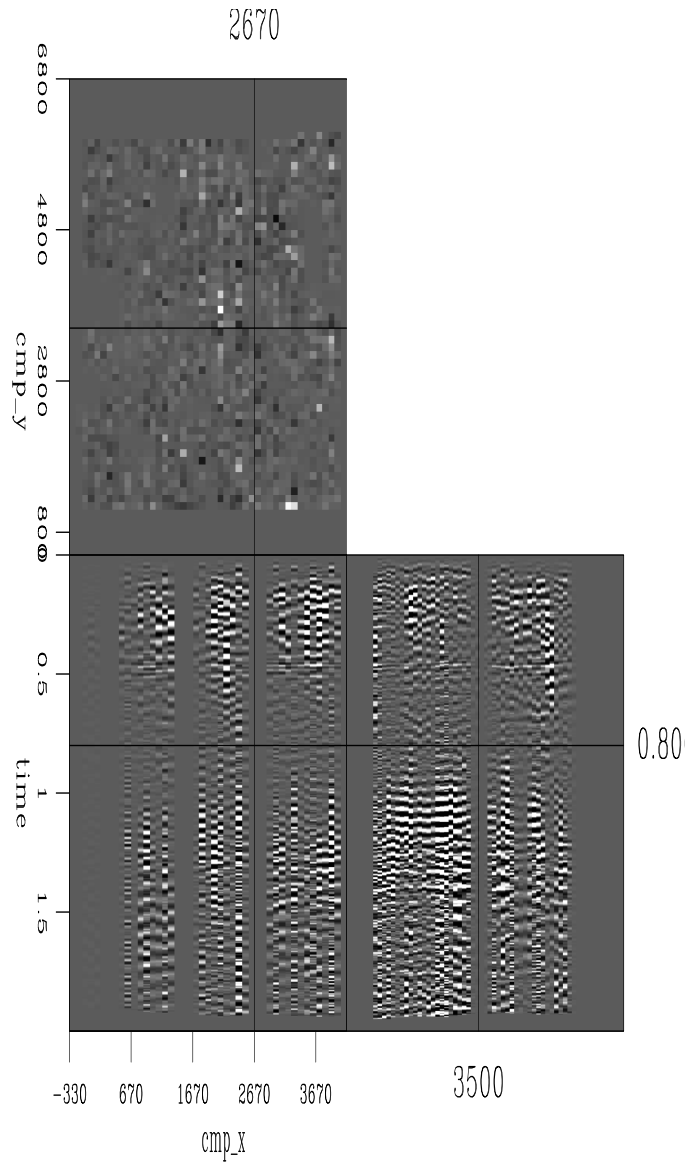


Figure 3: Near offset `amoco-3dland-near` [ER]

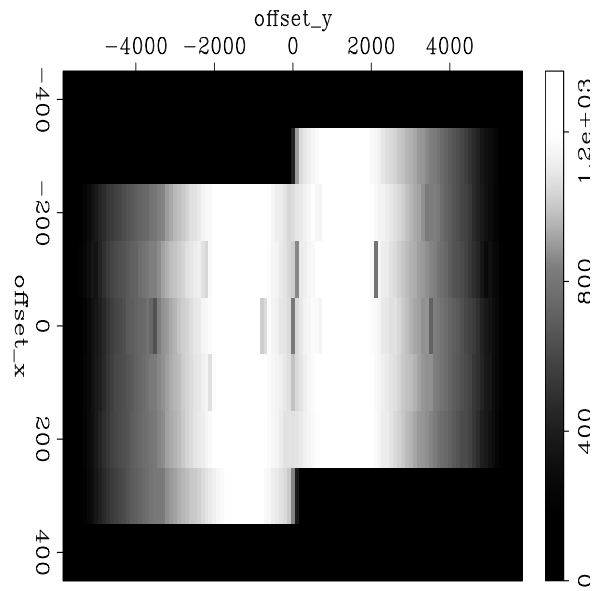


Figure 4: Fold-offset `amoco-3dland-fold-off` [ER]

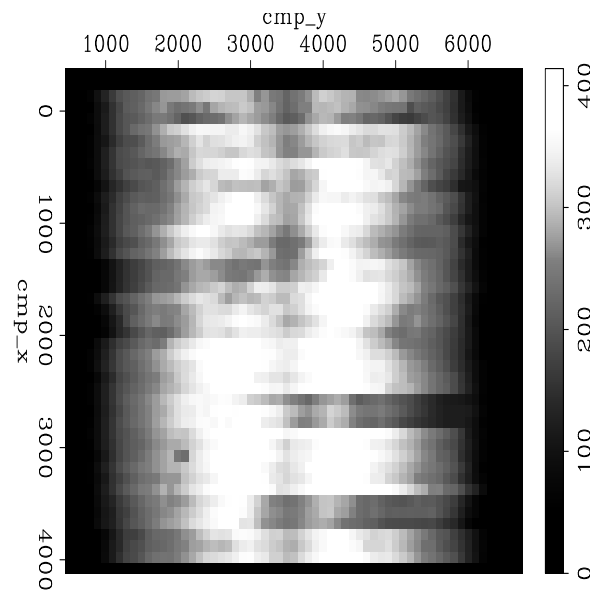


Figure 5: Fold-cmp `amoco-3dland-fold-cmp` [ER]

