

Amoco Saltdome

Robert G. Clapp¹

ABSTRACT

3 marine acquisition lines over a Salt Dome

AMOCO GOM DATA

Raw Data /data/2d_real/amoco_salt/data.H

Near offset /data/2d_real/amoco_salt/stack.H

Usage Tomography: (Etgen, 1990) **Geometry**

```
-----
                ***** ANL1.H *****
          4 -size                               data_format-xdr_float
-----
n1=2250                o1=0.000000          d1=0.004000          label1=
n2=120                 o2=250.000000        d2=25.000000         label2=
n3=662                 o3=0.000000          d3=50.000000         label3=
Data: in=./ANL1.H@
      79440 elements,   714960000 bytes in data file
-----
                ***** ANL2.H *****
          4 -size                               data_format-xdr_float
-----
n1=2250                o1=0.000000          d1=0.004000          label1=
n2=120                 o2=250.000000        d2=25.000000         label2=
n3=665                 o3=0.000000          d3=50.000000         label3=
Data: in=./ANL2.H@
      79800 elements,   718200000 bytes in data file
-----
                ***** ANL3.H *****
          4 -size                               data_format-xdr_float
-----
```

¹email: bob@sep.stanford.edu

```
n1=2250          o1=0.000000    d1=0.004000    label1=  
n2=120          o2=250.00000    d2=25.000000   label2=  
n3=653          o3=0.000000    d3=50.000000   label3=  
Data: in=./ANL3.H@  
       78360 elements,  705240000 bytes in data file
```

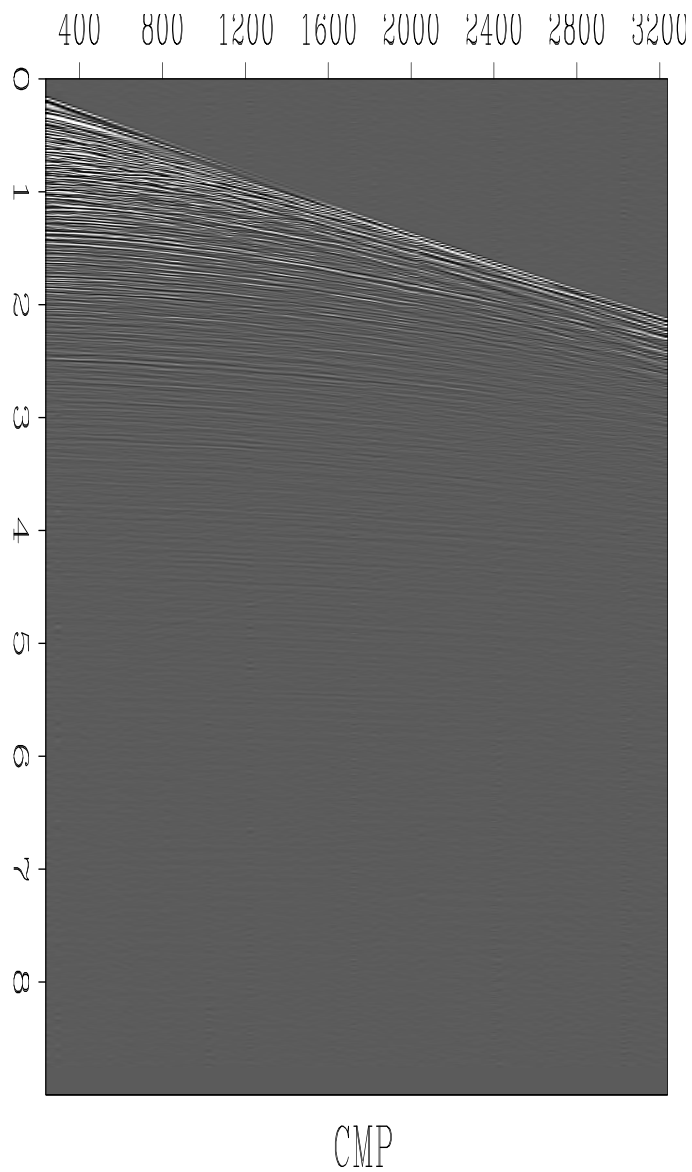
Problem**History of Data ??? Preprocessing ???****Proprietary Considerations ???**

Figure 1: Raw Data `amoco-salt-cmp` [ER]

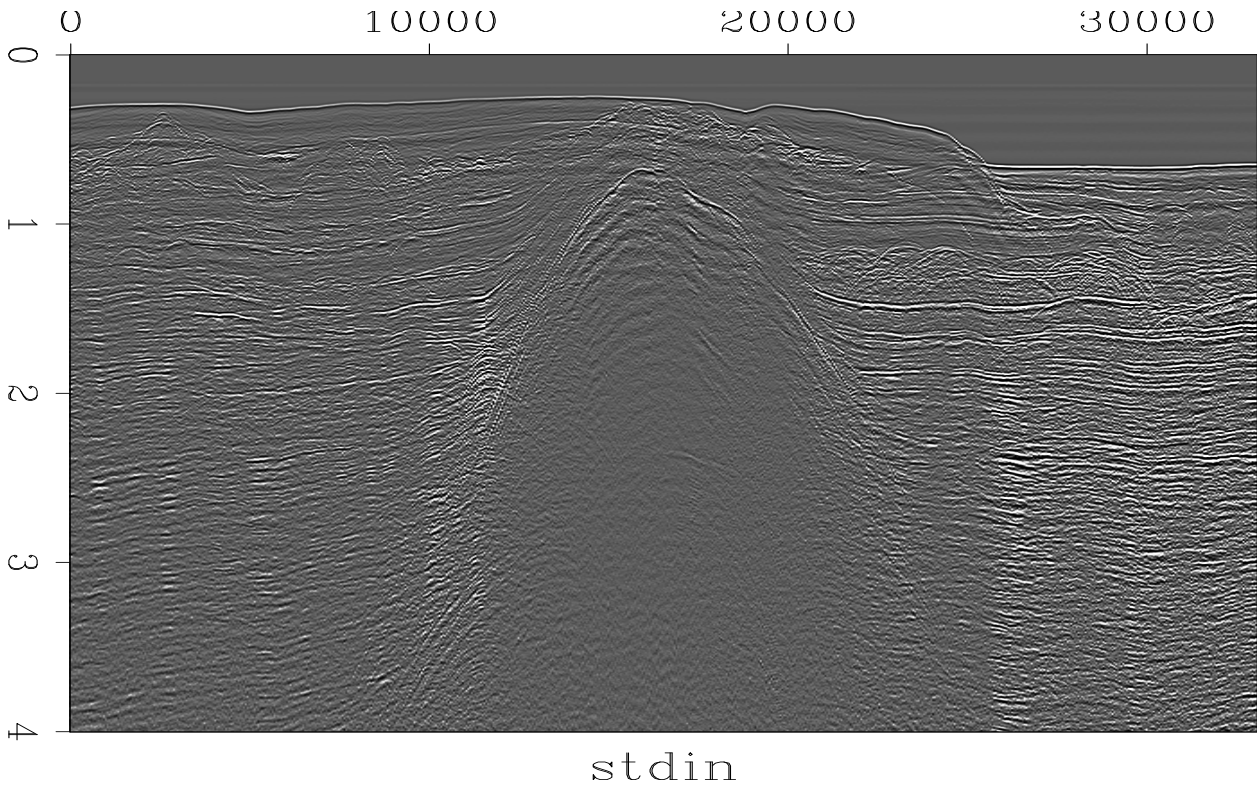


Figure 2: Near offset, line 1. `amoco-salt-near1` [ER]

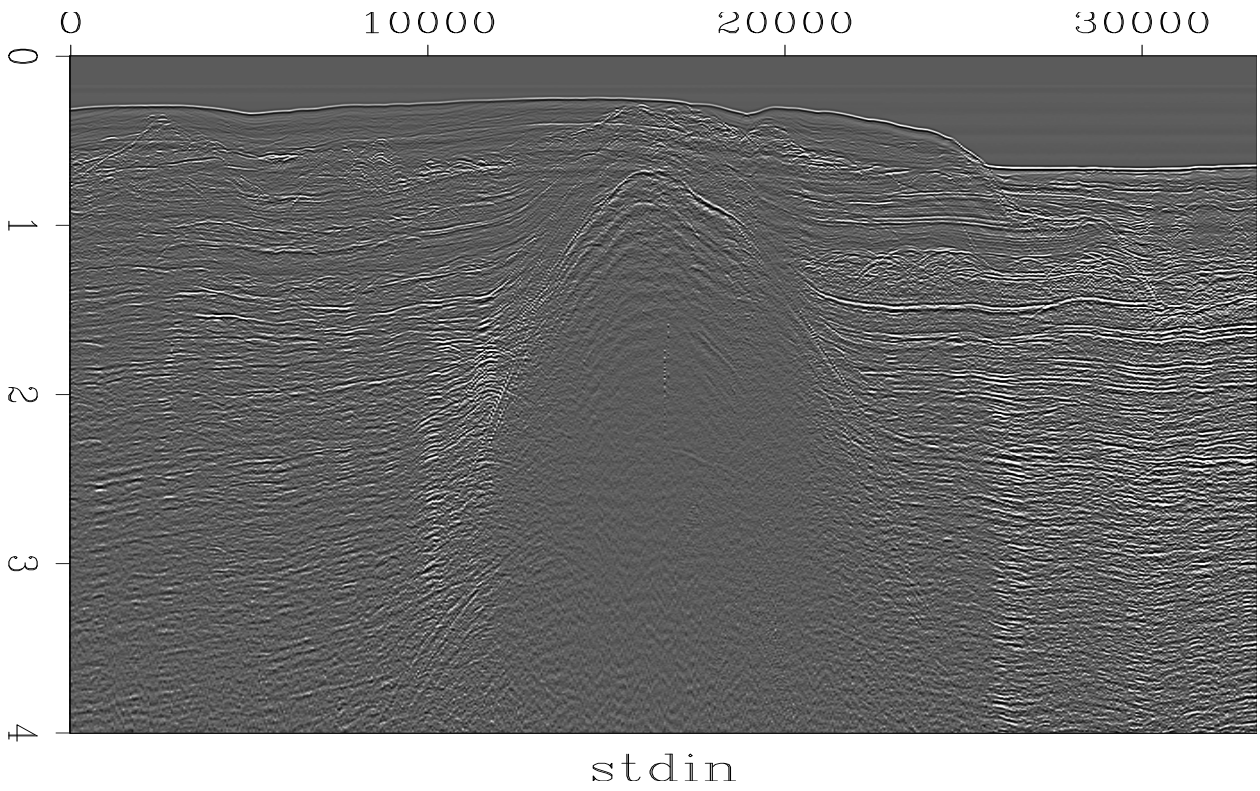


Figure 3: Near offset, line 2. `amoco-salt-near2` [ER]

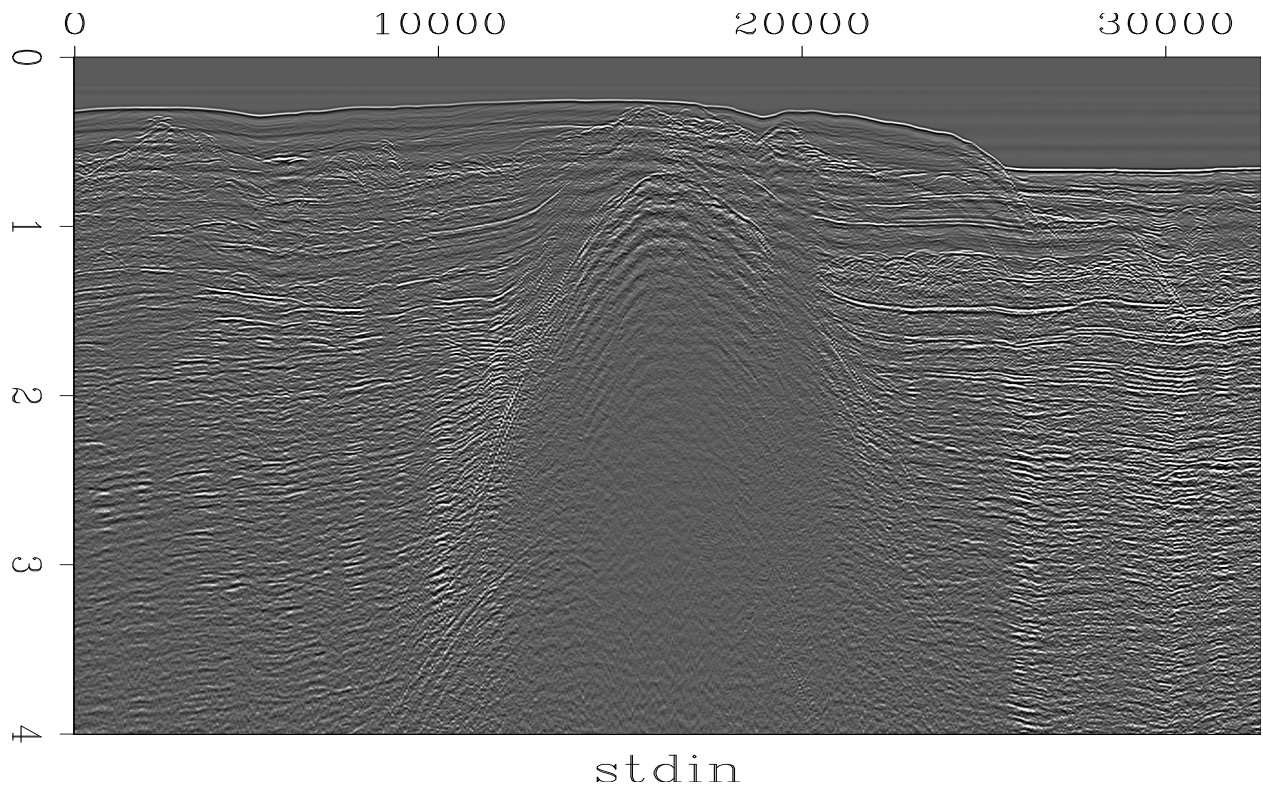


Figure 4: Near offset, line 3. `amoco-salt-near3` [ER]

REFERENCES

Etgen, J., 1990, Residual prestack migration and interval velocity estimation: Ph.D. thesis, Stanford University.

