

BEI data

*Morgan Brown*¹

ABSTRACT

Data from *Basic Earth Imaging*.

¹**email:** morgan@sep.stanford.edu

WESTERN GEOPHYSICAL DMO DATA

Raw Data /homes/sep/prof/bei/Data/midpts.HH

/homes/sep/prof/bei/Data/shots.HH

/homes/sep/prof/bei/Data/allmidpts.HH

Velocity Model N/A

Stack N/A

Zero-offset Migration N/A

Usage

Geometry

midpts.HH:

```

in="stdin"
expands to in="stdin"
esize=4
n1=1000 n2=24 n3=250 n4=1          6000000 elem          24000000 bytes
d1=0.004          d2=0.134          d3=0.0335          d4=1
o1=0 o2=0.264          o3=7.705          o4=0

```

shots.HH:

```

in="stdin"
expands to in="stdin"
esize=4
n1=1000 n2=48 n3=70 n4=1          3360000 elem          13440000 bytes
d1=0.004          d2=1          d3=1          d4=1
o1=0 o2=1 o3=851 o4=0

```

allmidpts.HH:

```

in="stdin"
expands to in="stdin"
esize=4
n1=1000 n2=24 n3=300 n4=1          7200000 elem          28800000 bytes
d1=0.004          d2=0.134          d3=0.0335          d4=1
o1=0 o2=0.264          o3=7.035          o4=0

```

Problem N/A

History of Data The SEP classic data set used by Hale, Fowler, and Ottolini theses. The data tape was read and sorted by Jim Black in 1992. midpts.HH and shots.HH This rendition is windowed 8ms data. 250 midpts (rounds up to 256) is used in BEI in July 1995. allmidpts.HH This is the original 4ms data. 300 midpts (rounds up to 512).

Preprocessing N/A

Proprietary Considerations N/A

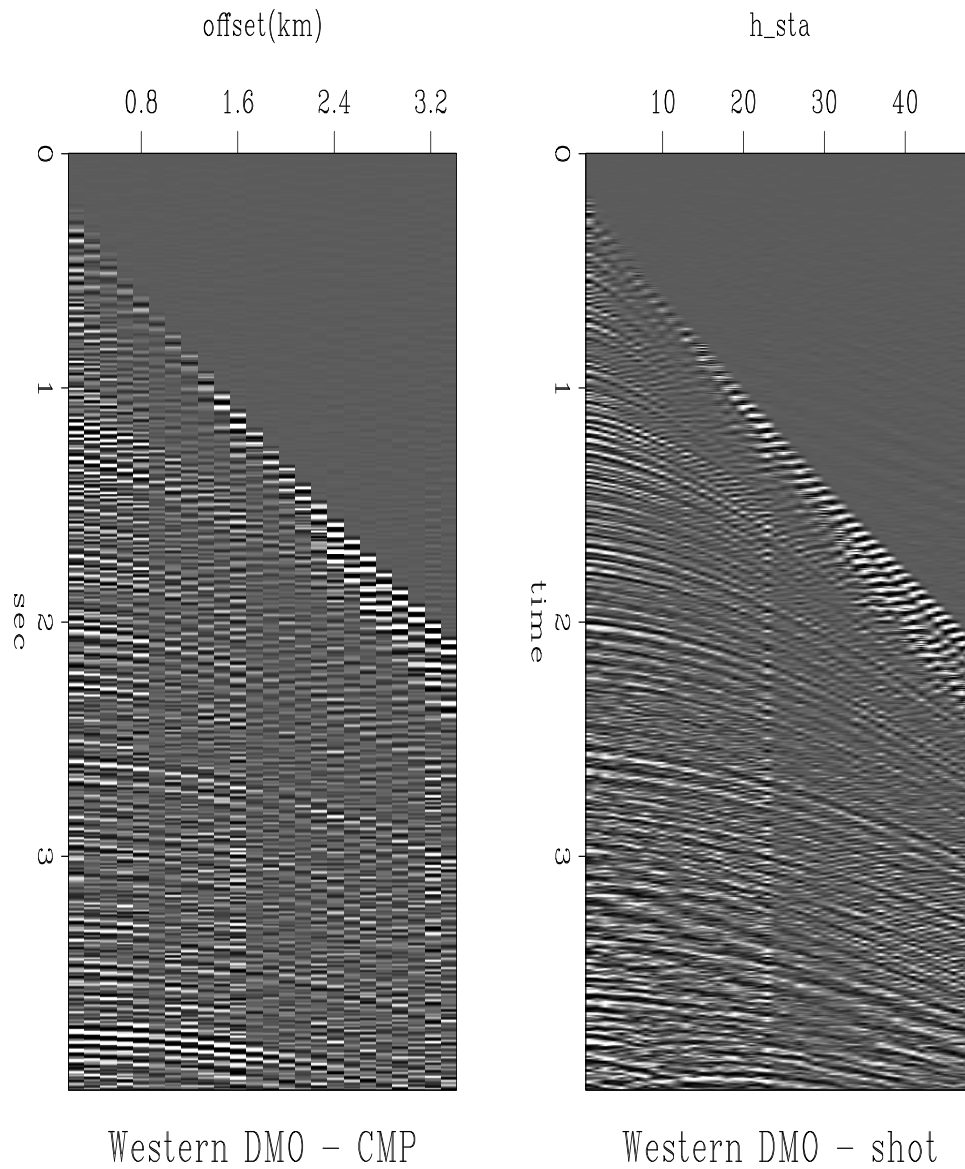


Figure 1: Western Geophysical DMO data. `bei-dmo` [ER]

YILMAZ AND CUMRO - WEST TEXAS**Raw Data** /homes/sep/prof/bei/Data/wz.02.H**Velocity Model** N/A**Stack** N/A**Zero-offset Migration** N/A**Usage** N/A**Geometry**

wz.02.H:

```
in="stdin"
expands to in="stdin"
esize=4
n1=1025 n2=127 n3=1          130175 elem      520700 bytes
d1=0.004          d2=0.03048          d3=1?
o1=0.004          o2=-2.83464          o3=0?
label1=Time(seconds)
label2=Offset(km)
```

Problem N/A**History of Data** West Texas, Vibroseis, Asymmetric split spread.**Preprocessing** N/A**Proprietary Considerations** N/A

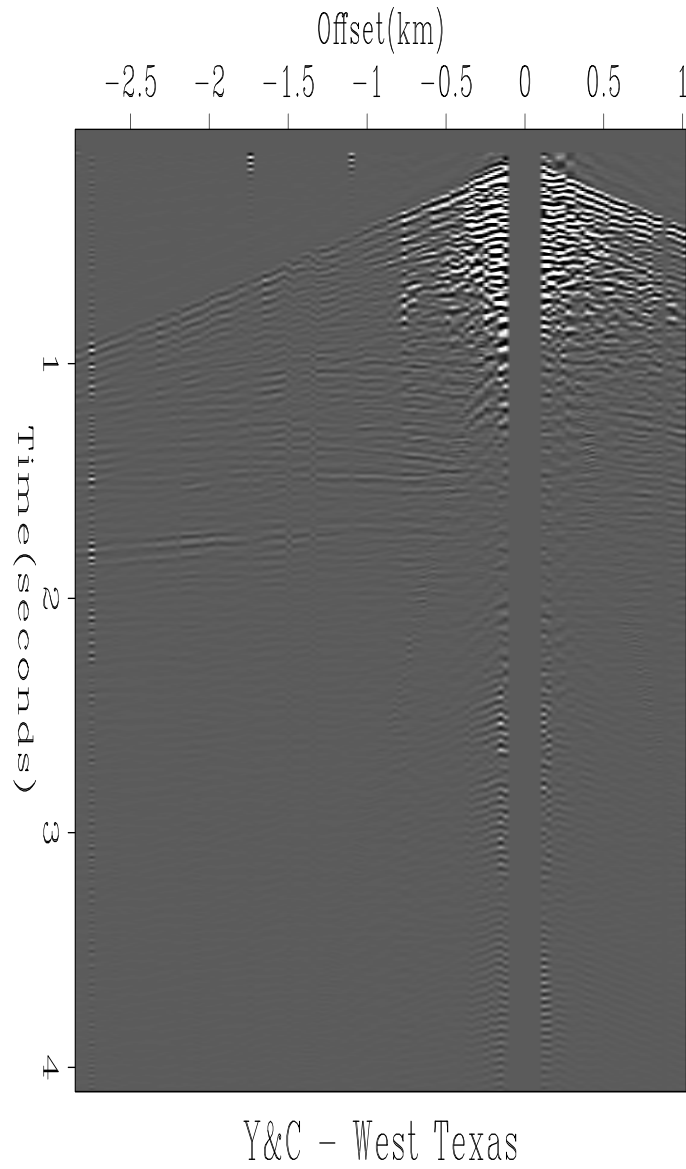


Figure 2: Yilmaz and Cumro - West Texas. `bei-wz-02` [ER]

YILMAZ AND CUMRO - SOUTH ALEUTIAN ISLANDS**Raw Data** /homes/sep/prof/bei/Data/wz.20.H**Velocity Model** N/A**Stack** N/A**Zero-offset Migration** N/A**Usage** N/A**Geometry**

wz.20.H:

```
in="stdin"
expands to in="stdin"
esize=4
n1=2025 n2=120 n3=1          243000 elem      972000 bytes
d1=0.004          d2=0.024994      d3=1?
o1=0.004          o2=0.2808        o3=0?
label1=Time(seconds)
label2=Offset(km)
```

Problem N/A**History of Data** South Aleutian Islands, AK - airgun.**Preprocessing** N/A**Proprietary Considerations** N/A

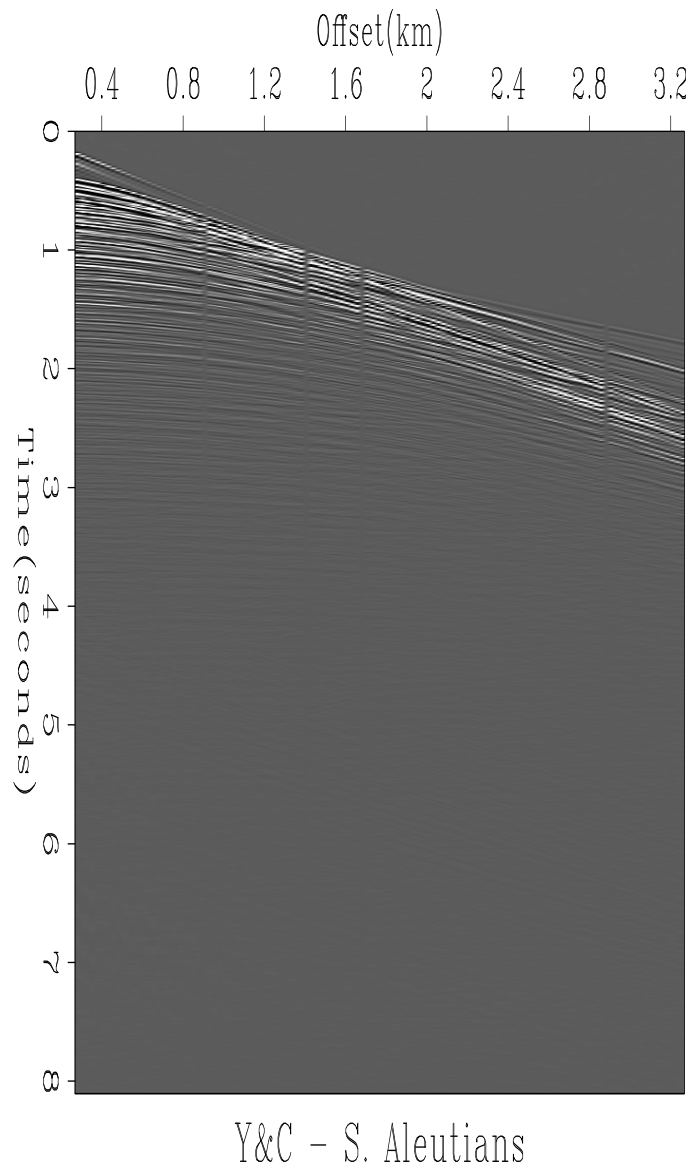


Figure 3: Yilmaz and Cumro - South Aleutian islands. `bei-wz-20` [ER]

YILMAZ AND CUMRO - ARCTIC**Raw Data** /homes/sep/prof/bei/Data/wz.24.H**Velocity Model** N/A**Stack** N/A**Zero-offset Migration** N/A**Usage** N/A**Geometry**

wz.24.H:

in="stdin"

expands to in="stdin"

esize=4

n1=3000 n2=49 n3=1 147000 elem 588000 bytes

d1=0.002 d2=0.067056 d3=1?

o1=0.002 o2=-1.60934 o3=0?

label1=Time(seconds)

label2=Offset(km)

Problem N/A**History of Data****Preprocessing** N/A**Proprietary Considerations** N/A

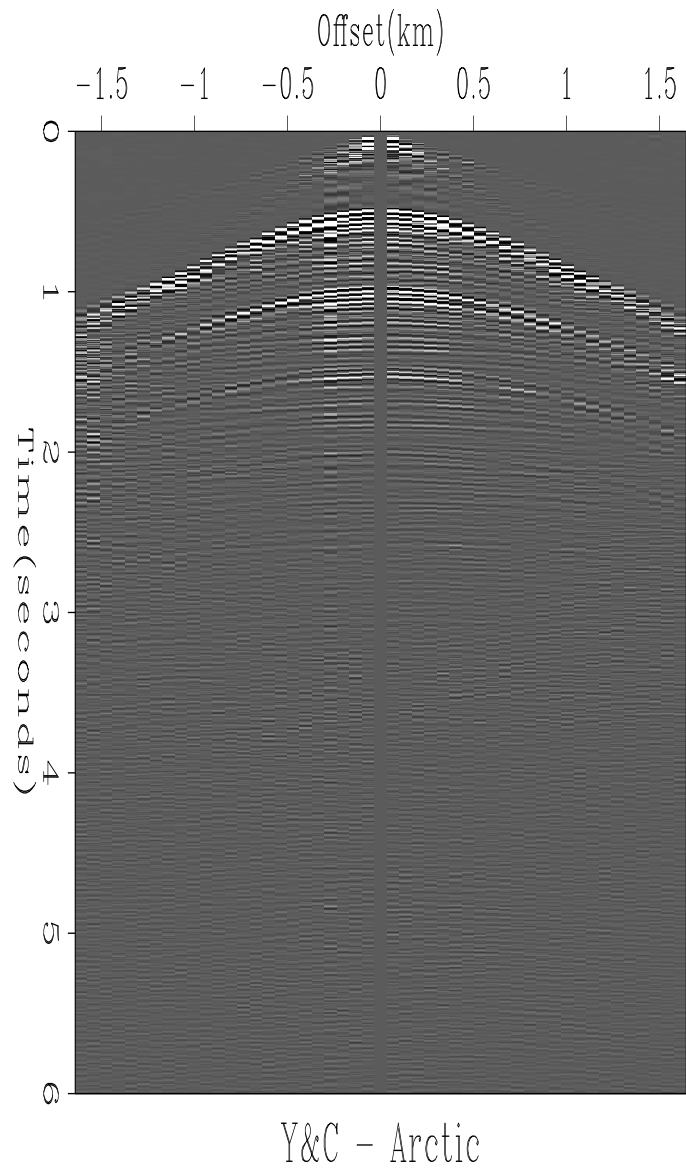


Figure 4: Yilmaz and Cumro - Arctic. bei-wz-24 [ER]

YILMAZ AND CUMRO - ALBERTA**Raw Data** /homes/sep/prof/bei/Data/wz.25.H**Velocity Model** N/A**Stack** N/A**Zero-offset Migration** N/A**Usage** N/A**Geometry**

wz.25.H:

in="stdin"

expands to in="stdin"

esize=4

n1=2000 n2=97 n3=1 194000 elem 776000 bytes

d1=0.002 d2=0.05 d3=1?

o1=0.002 o2=-2.4 o3=0?

label1=Time(seconds)

label2=Offset(km)

Problem N/A**History of Data** Alberta, dynamite, land split spread. The SEP t-shirt and CD-ROM logo!**Preprocessing** N/A**Proprietary Considerations** N/A

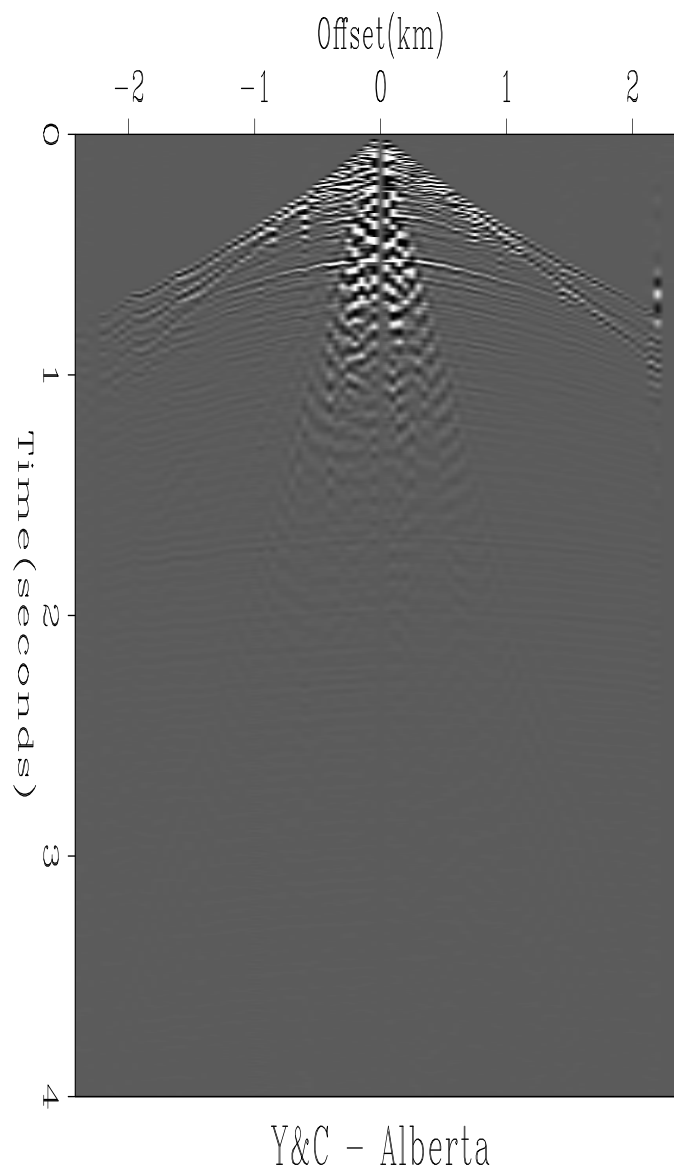


Figure 5: Yilmaz and Cumro - Alberta. bei-wz-25 [ER]

YILMAZ AND CUMRO - CANADA**Raw Data** /homes/sep/prof/bei/Data/wz.27.H**Velocity Model** N/A**Stack** N/A**Zero-offset Migration** N/A**Usage** N/A**Geometry**

wz.27.H:

in="stdin"

expands to in="stdin"

esize=4

n1=1791 n2=119 n3=1 213129 elem 852516 bytes

d1=0.004 d2=0.025 d3=1?

o1=0.004 o2=0.2 o3=0?

label1=Time(seconds)

label2=Offset(km)

Problem N/A**History of Data** Canada, airgun.**Preprocessing** N/A**Proprietary Considerations** N/A

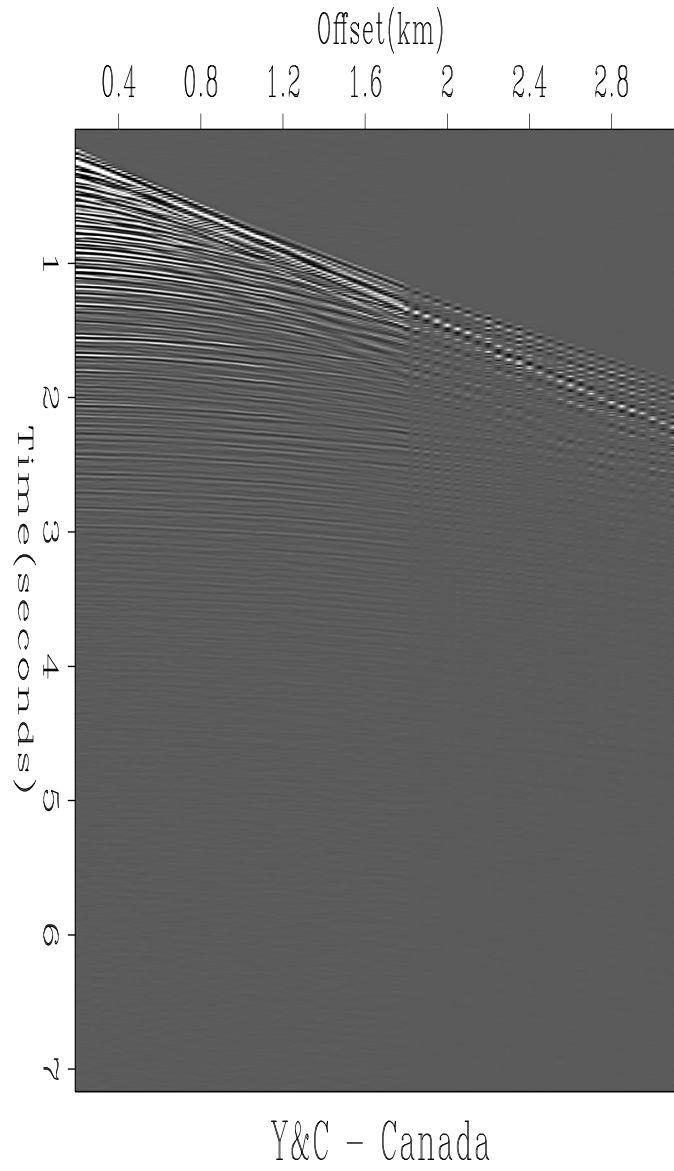


Figure 6: Yilmaz and Cumro - Canada. [bei-wz-27](#) [ER]

YILMAZ AND CUMRO - NORTH SEA**Raw Data** /homes/sep/prof/bei/Data/wz.32.H**Velocity Model** N/A**Stack** N/A**Zero-offset Migration** N/A**Usage** N/A**Geometry**

wz.32.H:

in="stdin"

expands to in="stdin"

esize=4

n1=1550 n2=96 n3=1 148800 elem 595200 bytes

d1=0.004 d2=0.025 d3=1?

o1=0.004 o2=0.17845 o3=0?

label1=Time(seconds)

label2=Offset(km)

Problem N/A**History of Data** North Sea, airgun.**Preprocessing** N/A**Proprietary Considerations** N/A

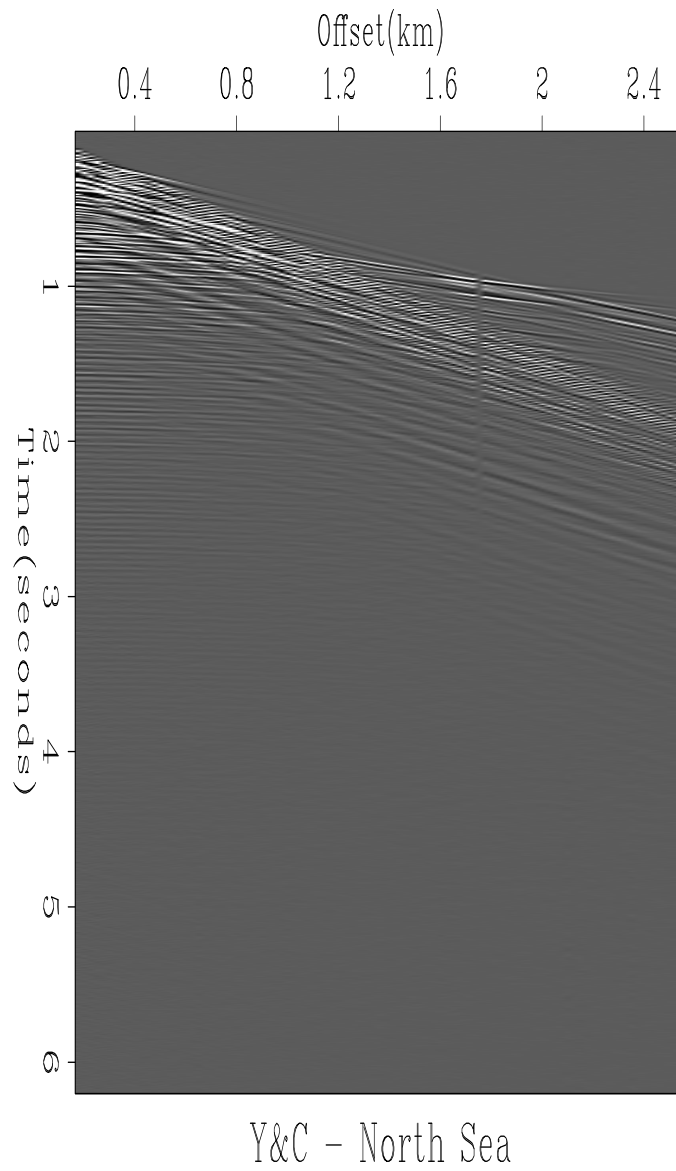


Figure 7: Yilmaz and Cumro - North Sea. bei-wz-32 [ER]

YILMAZ AND CUMRO - CELTIC SEA**Raw Data** /homes/sep/prof/bei/Data/wz.34.H**Velocity Model** N/A**Stack** N/A**Zero-offset Migration** N/A**Usage** N/A**Geometry**

wz.34.H:

in="stdin"

expands to in="stdin"

esize=4

n1=1480 n2=60 n3=1 88800 elem 355200 bytes

d1=0.004 d2=0.05 d3=1?

o1=0.004 o2=0.253 o3=0?

label1=Time(seconds)

label2=Offset(km)

Problem N/A**History of Data** Celtic Sea, airgun.**Preprocessing** N/A**Proprietary Considerations** N/A

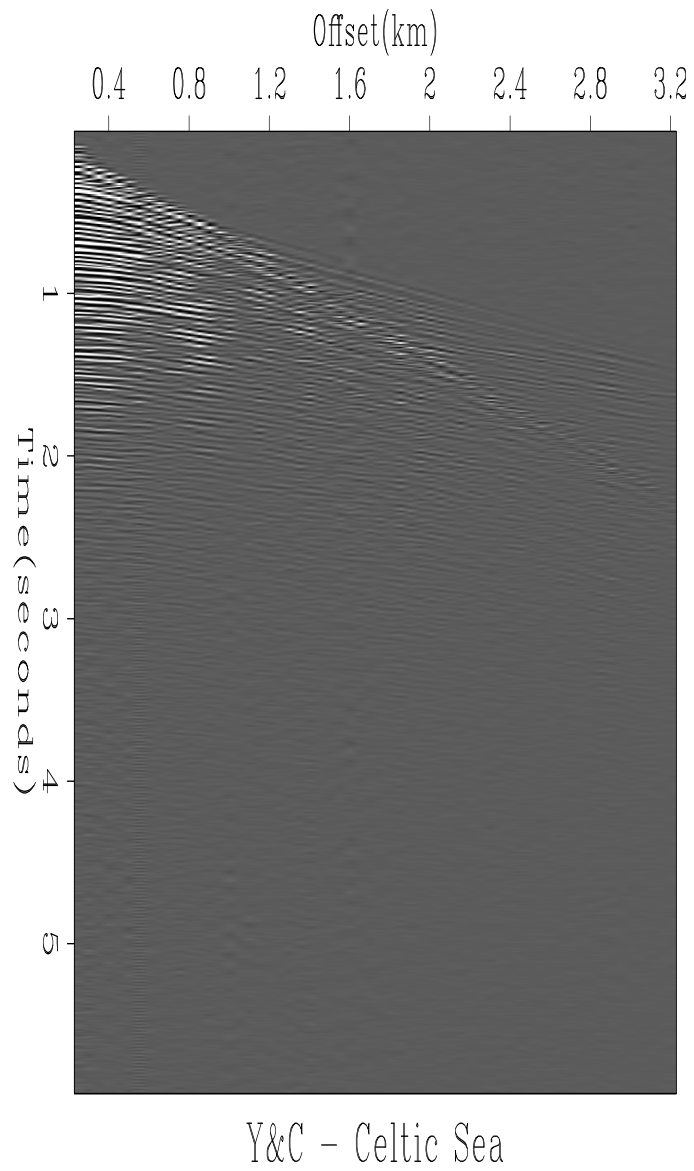


Figure 8: Yilmaz and Cumro - Celtic Sea. bei-wz-34 [ER]

REFERENCES

