

Deep crustal

Robert G. Clapp¹

ABSTRACT

This a deep crustal dataset. Little is known

UNOCAL GOM DATA

Raw Data /data/2d_real/deep_crustal/sort.H

Usage Unknown

Geometry

```
-----
                ***** sort.H *****
                4 -esize           Synched           data_format-xdr_float
-----
n1=2354                o1=0.000000           d1=0.004000           label1=time
n2=49860               o2=1.000000           d2=1.000000           label2=trace_number
Data: in=/scrsa2/bob/sort.H@
      49860 elements,   469481760 bytes in data file
-----
keynumber=1           keytype=scalar_int           keyname=sx
keynumber=2           keytype=scalar_int           keyname=sy
keynumber=3           keytype=scalar_int           keyname=gx
keynumber=4           keytype=scalar_int           keyname=gy
keynumber=5           keytype=scalar_int           keyname=nhs
keynumber=6           keytype=scalar_int           keyname=sstat
keynumber=7           keytype=scalar_int           keyname=gstat
keynumber=8           keytype=scalar_float         keyname=s_x
keynumber=9           keytype=scalar_float         keyname=g_x
keynumber=10          keytype=scalar_float         keyname=cmp_x
keynumber=11          keytype=scalar_float         keyname=offset_x
keynumber=12          keytype=scalar_int           keyname=data_record_number
n2=49860              o2=1.000000           d2=1.000000           label2=trace_number
Headers in=/scrsa2/bob/sort.H@@@
      598320 elements,   2393280 bytes in data file
-----
```

¹email: bob@sep.stanford.edu

```
-----  
grid axis2      n2=180          o2=150.000000   d2=175.000000   label2=offset_x  
grid axis3      n3=732          o3=7996.500000   d3=43.750000   label3=cmp_x  
Grid   in=/scrsa2/bob/sort.H@@@@  
      131760 elements,      527040 bytes in data file  
-----
```

Problem Historical deep crustal problems

History of Data Unknown

Preprocessing Unknown

Proprietary Considerations Unknown

REFERENCES

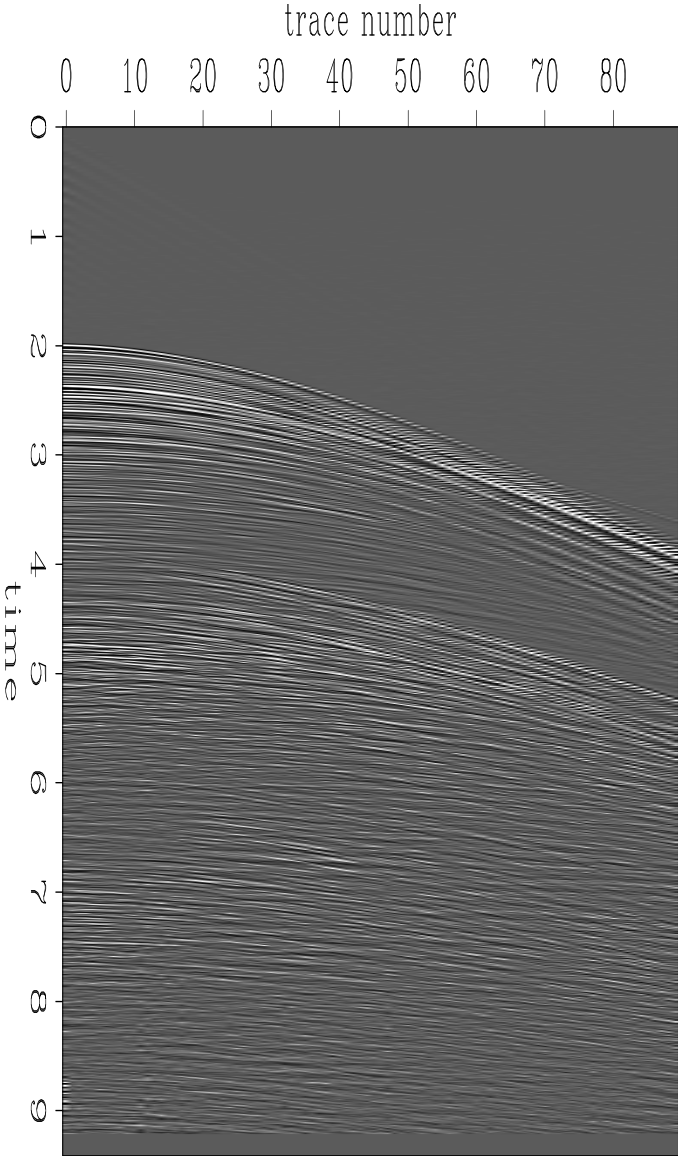


Figure 1: CMP GATHER `deep-crustal-data-slice` [ER]

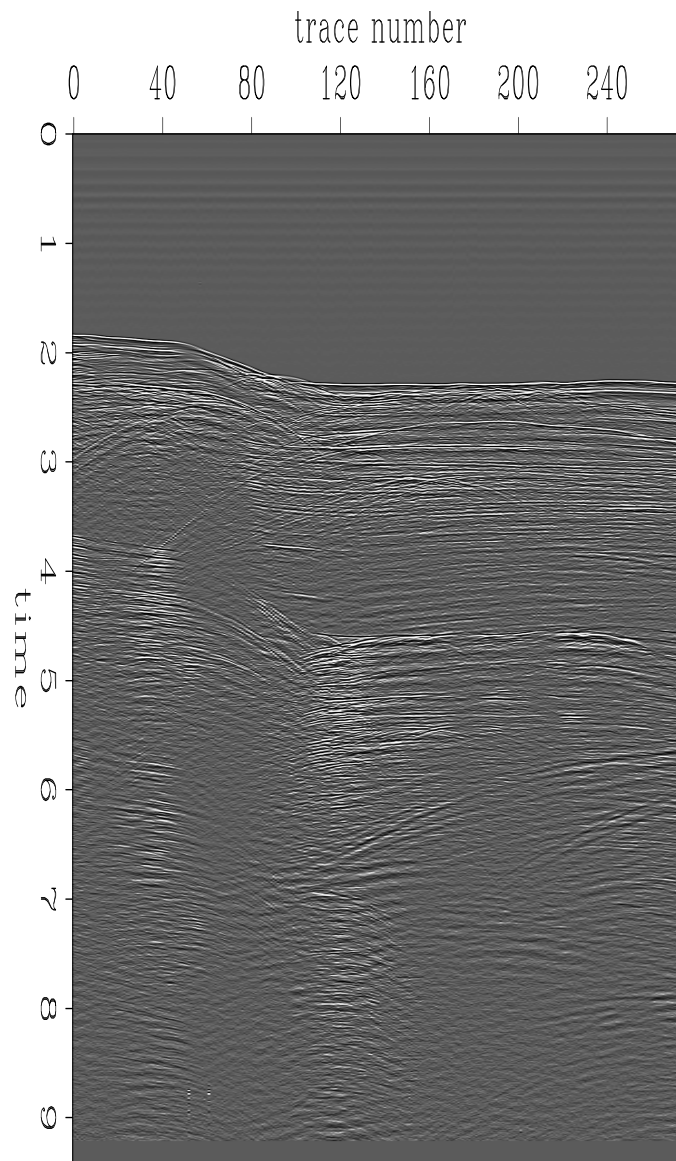


Figure 2: Near offset section `deep-crustal-near-offset` [ER]

