

# Elf Multiple Synthetic

*Sergey Fomel*<sup>1</sup>

## ABSTRACT

Synthetic shot gathers with multiples. Modeled after the Mobil AVO dataset.

## DATA

**Raw Data** /data/2d\_synthetic/elf\_multiple/elf\_synthetic.H

**Usage** None **Geometry**

```
esize=4
n1=1001 n2=120 n3=200          24024000 elem 96096000 byte
d1=0.004          d2=-25 d3=25
      Warning: d2 is negative. Legal, but risky.
o1=0   o2=3238 o3=0?
label1=time
label2=receiver (m)
label3=shot (m)
```

**Problem** Demultiple

**History of Data** Generated by Elf in 1994 (Ali C. Tura)

**Preprocessing** ??

**Proprietary Considerations**

## REFERENCES

---

<sup>1</sup>**email:** sergey@sep.stanford.edu

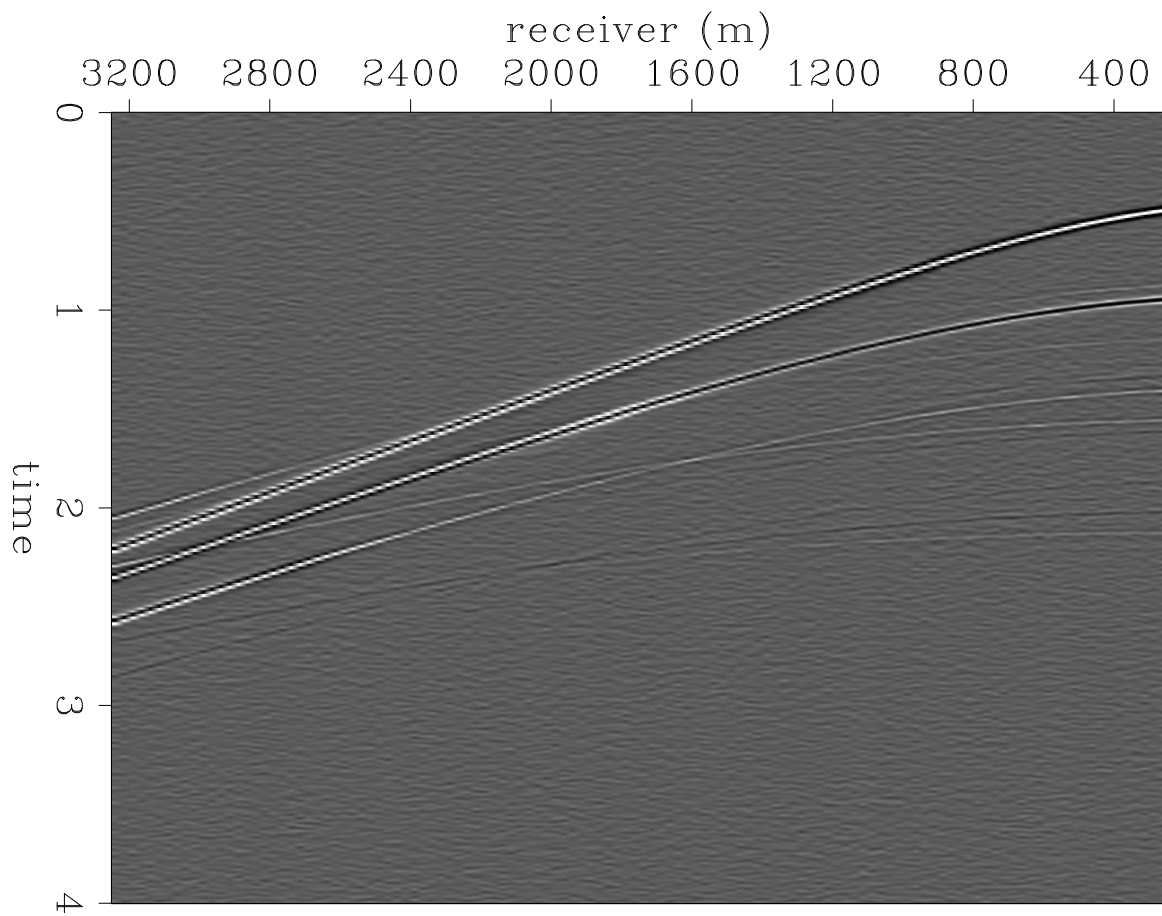


Figure 1: A shot gather. `elf-mult-synthetic-shot` [ER]

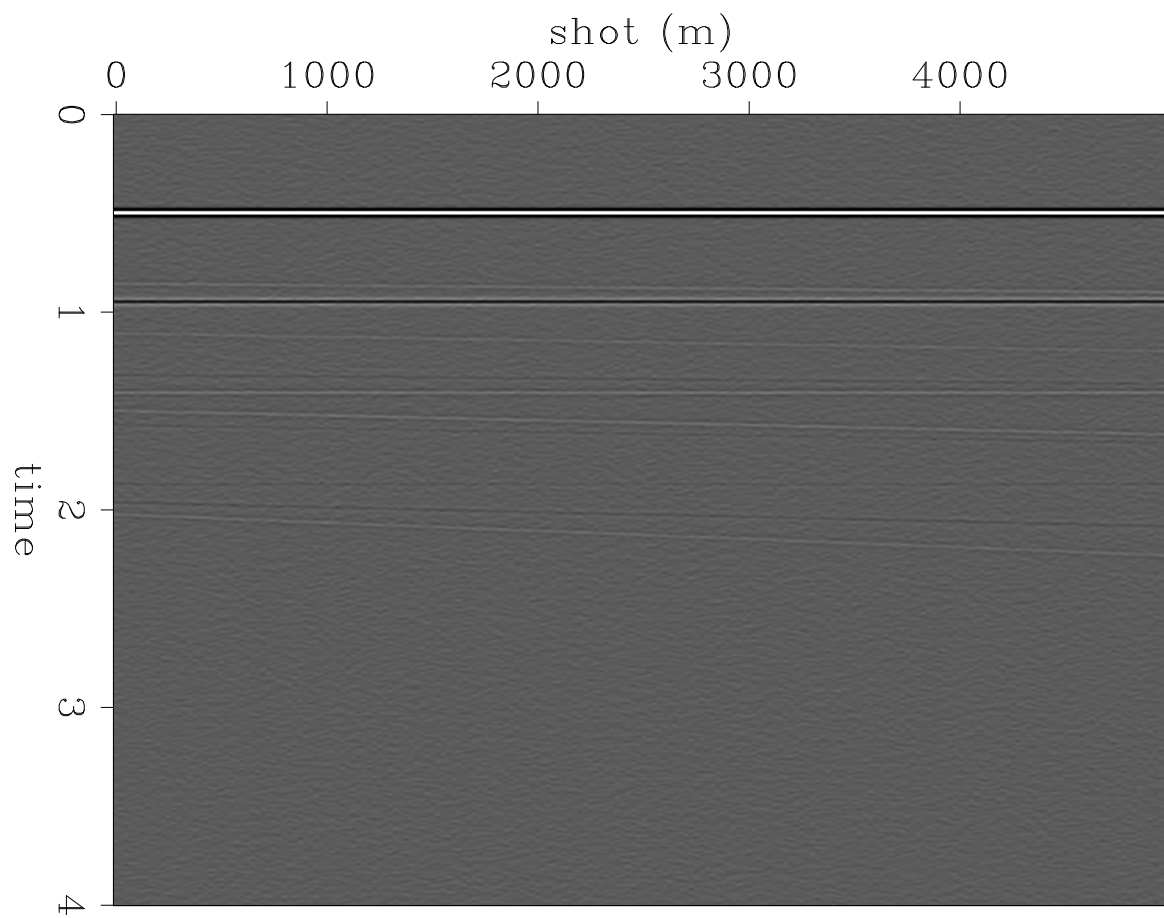


Figure 2: A near offset section. `elf-mult-synthetic-near` [ER]

