

Gulf of Alaska 2D

*Morgan Brown*¹

ABSTRACT

Two 2-D marine datasets from Gulf of Alaska, apparently part of a larger 3-D dataset.

GULF OF ALASKA 2D - LINE 511

Raw Data /data/2d_real/gulf_of_alaska/sort511.H

Velocity Model N/A

Stack N/A

Zero-offset Migration N/A

Usage N/A

Geometry

```
-----  
                ***** sort511.H *****  
      4 -esize           Synched           data_format-xdr_float  
-----  
n1=2000                o1=0.000000        d1=0.004000        label1=time  
n2=12000               o2=1.000000        d2=1.000000        label2=trace_number  
Data: in=./sort511.H@  
      12000 elements,    96000000 bytes in data file  
-----
```

```
keynumber=1           keytype=scalar_int       keyname=tracl  
keynumber=2           keytype=scalar_int       keyname=tracr  
keynumber=3           keytype=scalar_int       keyname=fldr  
keynumber=4           keytype=scalar_int       keyname=tracf  
keynumber=5           keytype=scalar_int       keyname=trid  
keynumber=6           keytype=scalar_float      keyname=s_x  
keynumber=7           keytype=scalar_float      keyname=offset_x  
keynumber=8           keytype=scalar_float      keyname=g_x  
keynumber=9           keytype=scalar_float      keyname=cmp_x  
keynumber=10          keytype=scalar_int       keyname=data_record_number  
n2=12000              o2=1.000000            d2=1.000000        label2=trace_number  
Headers in=./sort511.H@@@
```

¹**email:** morgansep.stanford.edu

```

120000 elements,      480000 bytes in data file
-----
grid axis2      n2=25      o2=0.000000      d2=100.000000      label2=offset_x
grid axis3      n3=631      o3=0.000000      d3=25.000000      label3=cmp_x
Grid   in=./sort511.H@@@@
15775 elements,      63100 bytes in data file
-----
-----

```

Problem Deep crustal?
History of Data Unknown
Preprocessing CMP sort
Proprietary Considerations N/A

GULF OF ALASKA 2D - LINE 4043

Raw Data /data/2d_real/gulf_of_alaska/sort4043.H
Velocity Model N/A
Stack N/A
Zero-offset Migration N/A
Usage N/A
Geometry

```

-----
***** sort4043.H *****
4 -esize      Synched      data_format-xdr_float
-----
n1=2500      o1=0.000000      d1=0.004000      label1=time
n2=12000     o2=1.000000      d2=1.000000      label2=trace_number
Data: in=./sort4043.H@
12000 elements, 120000000 bytes in data file
-----
keynumber=1   keytype=scalar_int   keyname=tracl
keynumber=2   keytype=scalar_int   keyname=tracr
keynumber=3   keytype=scalar_int   keyname=fldr
keynumber=4   keytype=scalar_int   keyname=tracf
keynumber=5   keytype=scalar_int   keyname=trid
keynumber=6   keytype=scalar_float  keyname=s_x
keynumber=7   keytype=scalar_float  keyname=offset_x
keynumber=8   keytype=scalar_float  keyname=g_x
keynumber=9   keytype=scalar_float  keyname=cmp_x
keynumber=10  keytype=scalar_int    keyname=data_record_number

```

```
n2=12000          o2=1.000000      d2=1.000000      label2=trace_number
Headers in=./sort4043.H@@@
      120000 elements,      480000 bytes in data file
-----
grid axis2          n2=25      o2=0.000000      d2=100.000000      label2=offset_x
grid axis3          n3=631          o3=0.000000      d3=25.000000      label3=cmp_x
Grid   in=./sort4043.H@@@@
      15775 elements,      63100 bytes in data file
-----
-----
```

Problem Deep crustal?

History of Data Unknown

Preprocessing CMP sort

Proprietary Considerations N/A

REFERENCES

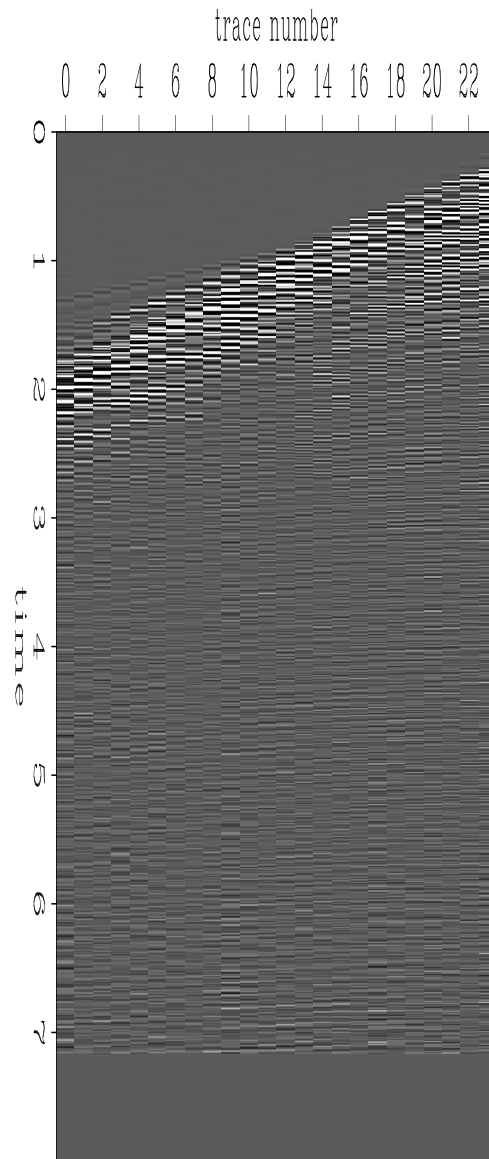


Figure 1: Line 511 - CMP gather `gulf-of-alaska-cmp-511` [ER]

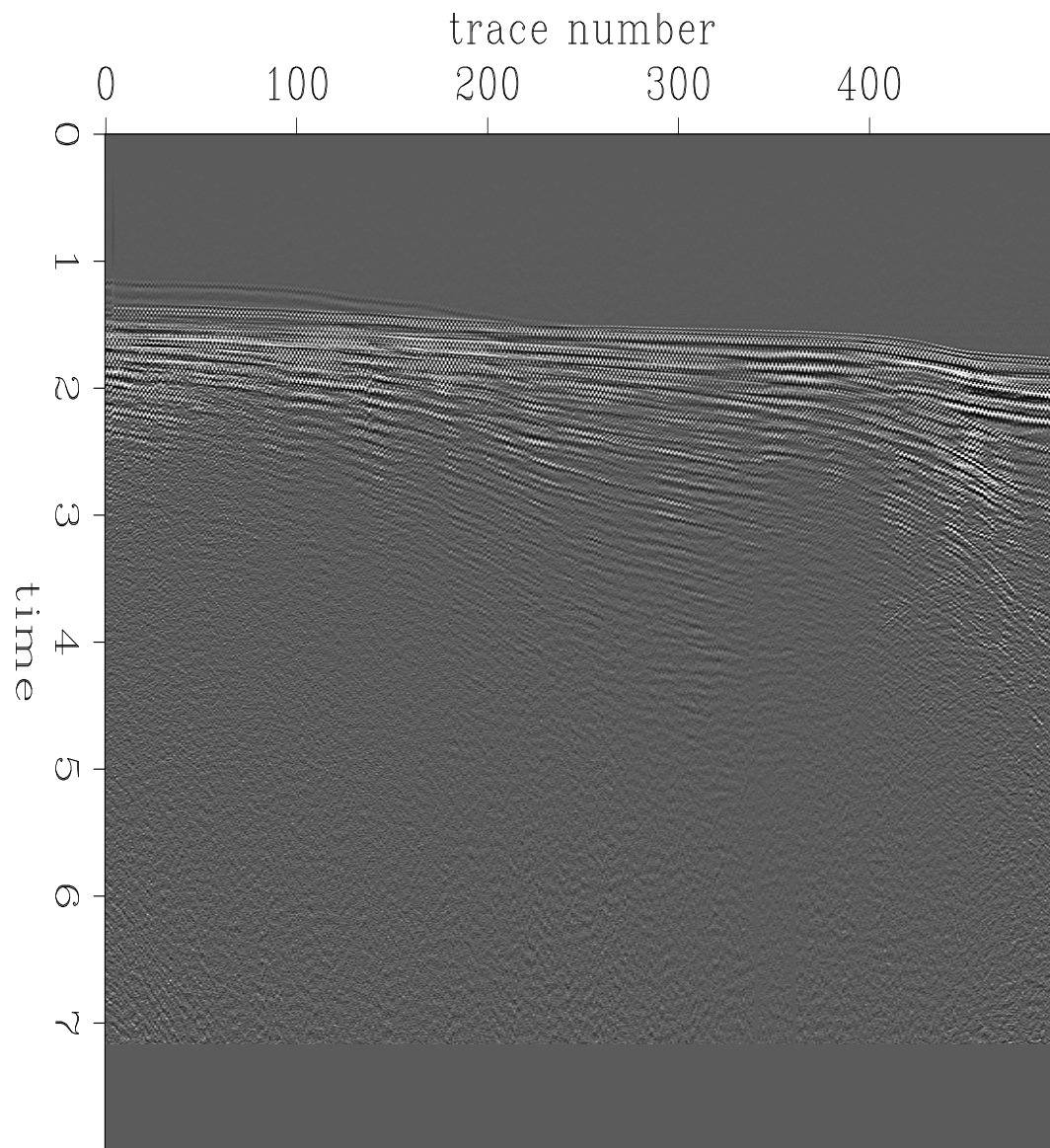


Figure 2: Line 511 - Constant offset section `gulf-of-alaska-const-offset-511` [ER]

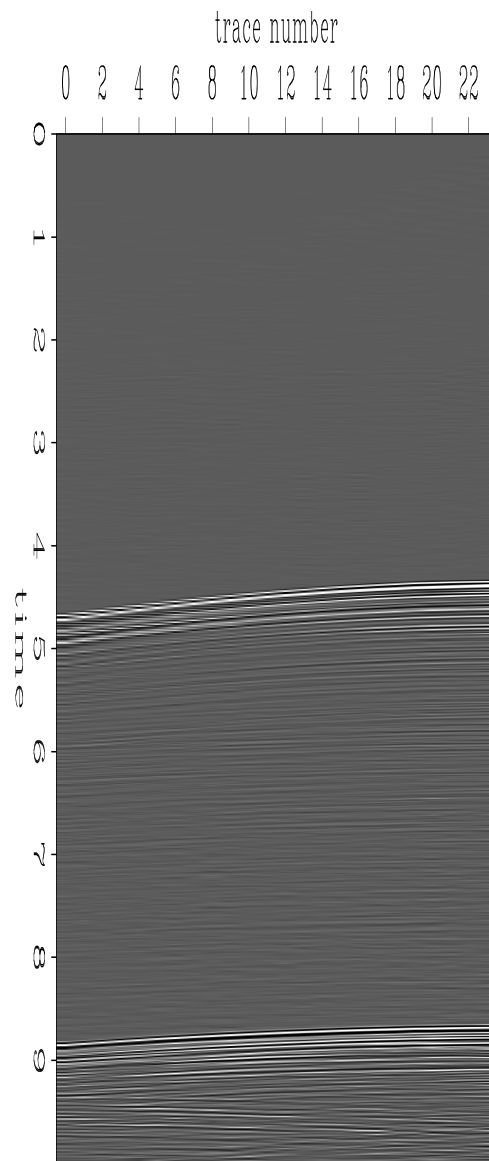


Figure 3: Line 4043 - CMP gather `gulf-of-alaska-cmp-4043` [ER]

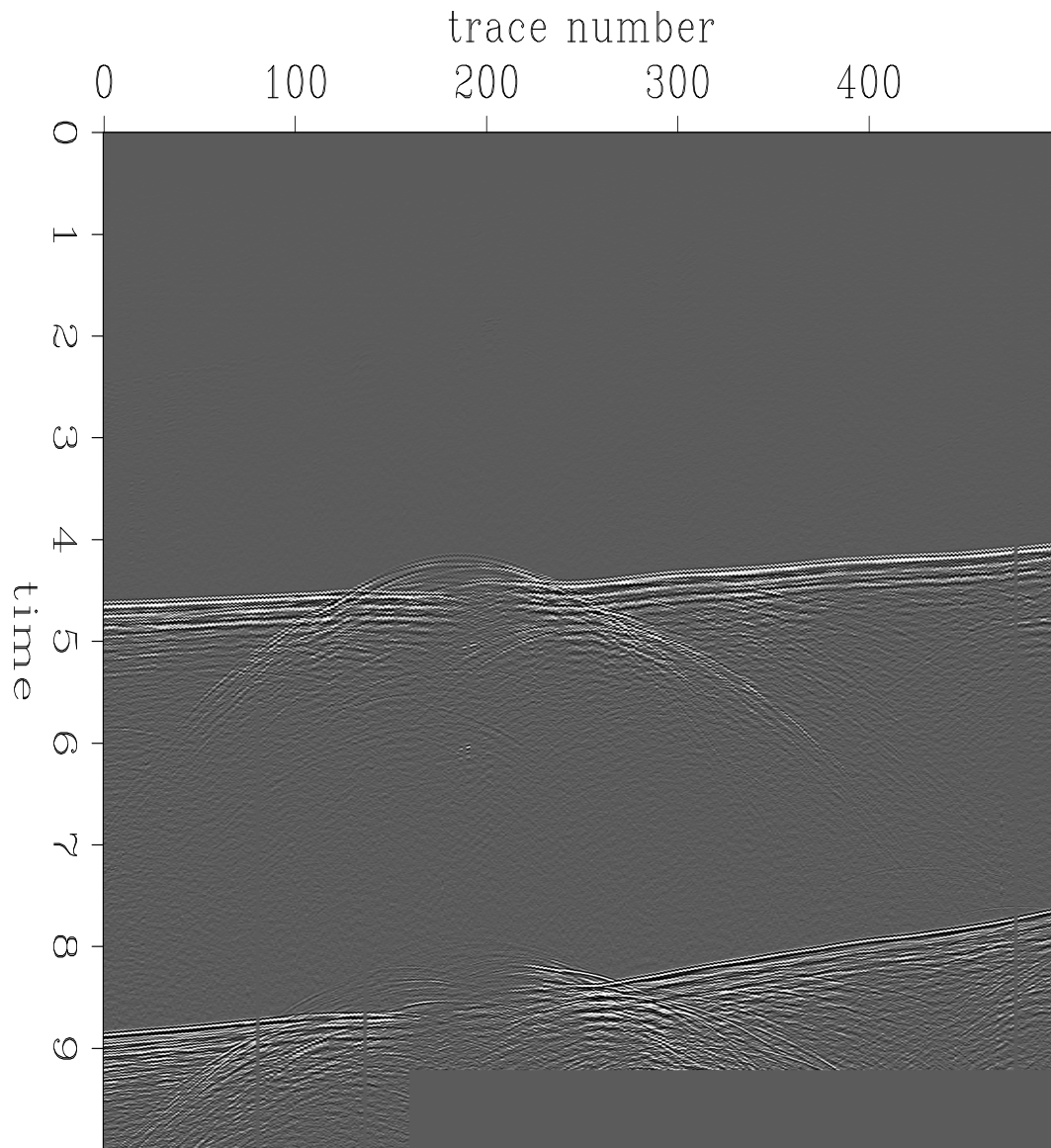


Figure 4: Line 4043 - Constant offset section `gulf-of-alaska-const-offset-4043` [ER]

