

Kjartansson dataset

*Morgan Brown*¹

ABSTRACT

Kjartansson dataset

¹**email:** morgan@sep.stanford.edu

Raw Data /data/2d_real/kjartansson/kjar_raw_cmps.HH
/data/2d_real/kjartansson/kjar_100_cmps.HH

Velocity Model N/A

Stack N/A

Zero-offset Migration N/A

Usage Attenuation: (Kjartansson, 1979)

Geometry

kjar_100_cmps.HH:

```
in="/data/2d_real/kjartansson/kjar_100_cmps.HH@"
expands to in="/data/2d_real/kjartansson/kjar_100_cmps.HH@"
esize=4
n1=2000 n2=48 n3=100 n4=1 9600000 elem 38400000 bytes
d1=0.002 d2=0.05 d3=0.025 d4=1
o1=0 o2=-2.591 o3=0 o4=0
label1=time (s)
label2=offset (km)
label3=midpoint (km)
```

kjar_raw_cmps.HH:

```
in="/data/2d_real/kjartansson/kjar_raw_cmps.HH@"
expands to in="/data/2d_real/kjartansson/kjar_raw_cmps.HH@"
esize=4
n1=2500 n2=48 n3=475 57000000 elem 228000000 bytes
d1=0.002 d2=0.05 d3=0.025
o1=0 o2=-2.591 o3=0
label1=time (s)
label2=offset (km)
label3=midpoint (km)
```

Problem N/A
History of Data

NOTES:

- (1) Some trace header information is written in the trace data area on the far offset traces! This can be muted out by applying a standard water velocity mute...
- (2) The first 47 CMP gathers are not full fold due to shot roll-along fold build-up into the full-fold portion of the line.
- (3) AVO "bright spot" due to producing gas reservoir is at about 2.3 seconds, and is contaminated by de/focussing thru near surface velocity anomalies at about 400 msec. ???
- (4) This data set was used in Kjartansson's thesis: SEP-23.

-- David. 8/93.

Preprocessing N/A

Proprietary Considerations N/A

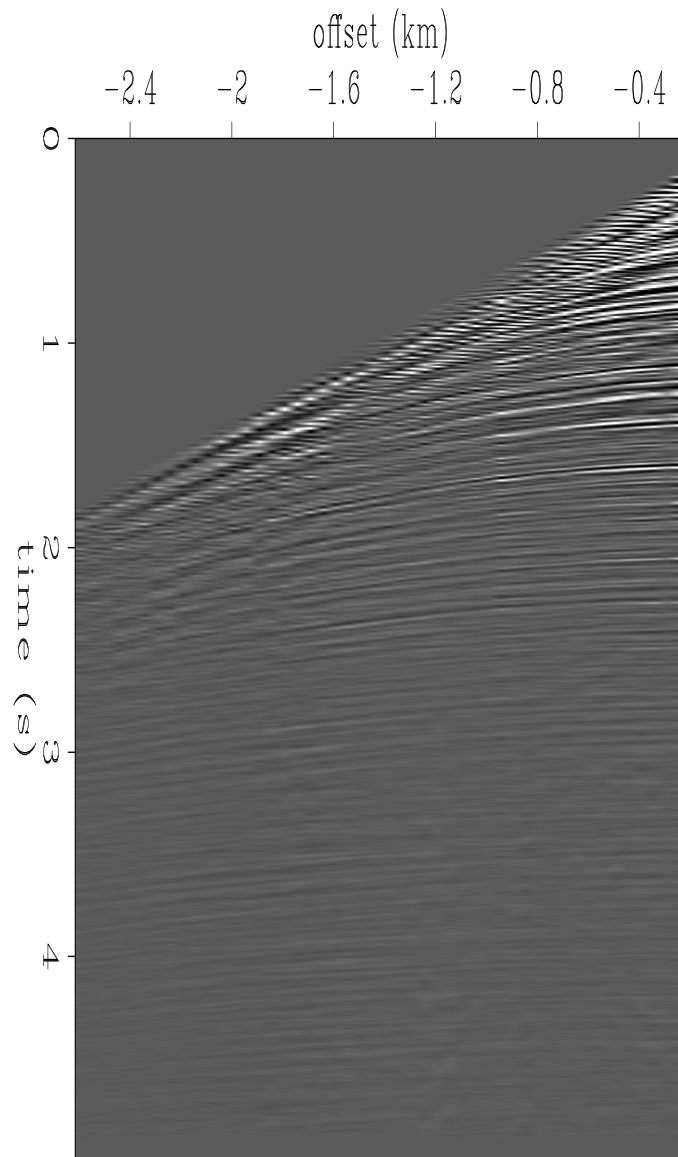


Figure 1: CMP gather, muted as noted above. `kjartansson-cmp` [ER]

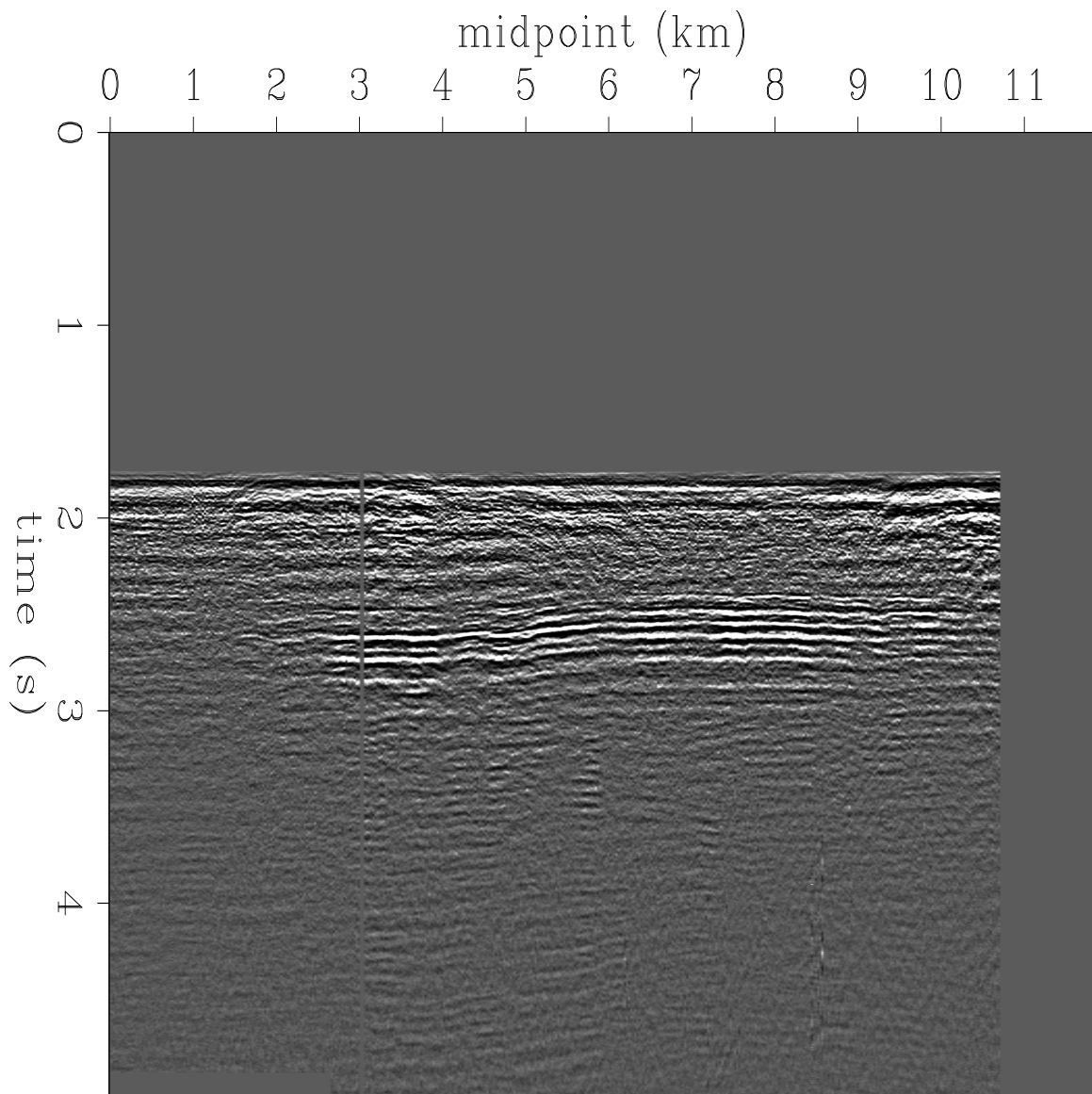


Figure 2: Near offset gather, muted as noted above. `kjartansson-nearoff` [ER]

REFERENCES

Kjartansson, E., 1979, Attenuation of seismic waves in rocks and applications in energy exploration: SEP-23.

