

Michigan GPR dataset

*James Rickett*¹

ABSTRACT

100 MHz GPR data collected in Schoolcraft, MI, and given to SEP by Ran Bachrach. The data consists of two common-offset (1 m) lines. The antennas were on grass and the flat reflector is the water-table. Near surface consists of soil and glacial deposits. The many surface scatterers are probably large pebbles or clusters of large grains. For more details see `/data/fun/michigan-gpr/README`.

MICHIGAN GPR DATASET

Raw Data `/data/fun/michigan-gpr/gprA1.HH` and `/data/fun/michigan-gpr/gprA3.HH`
Geometry

`gprA1.HH:`

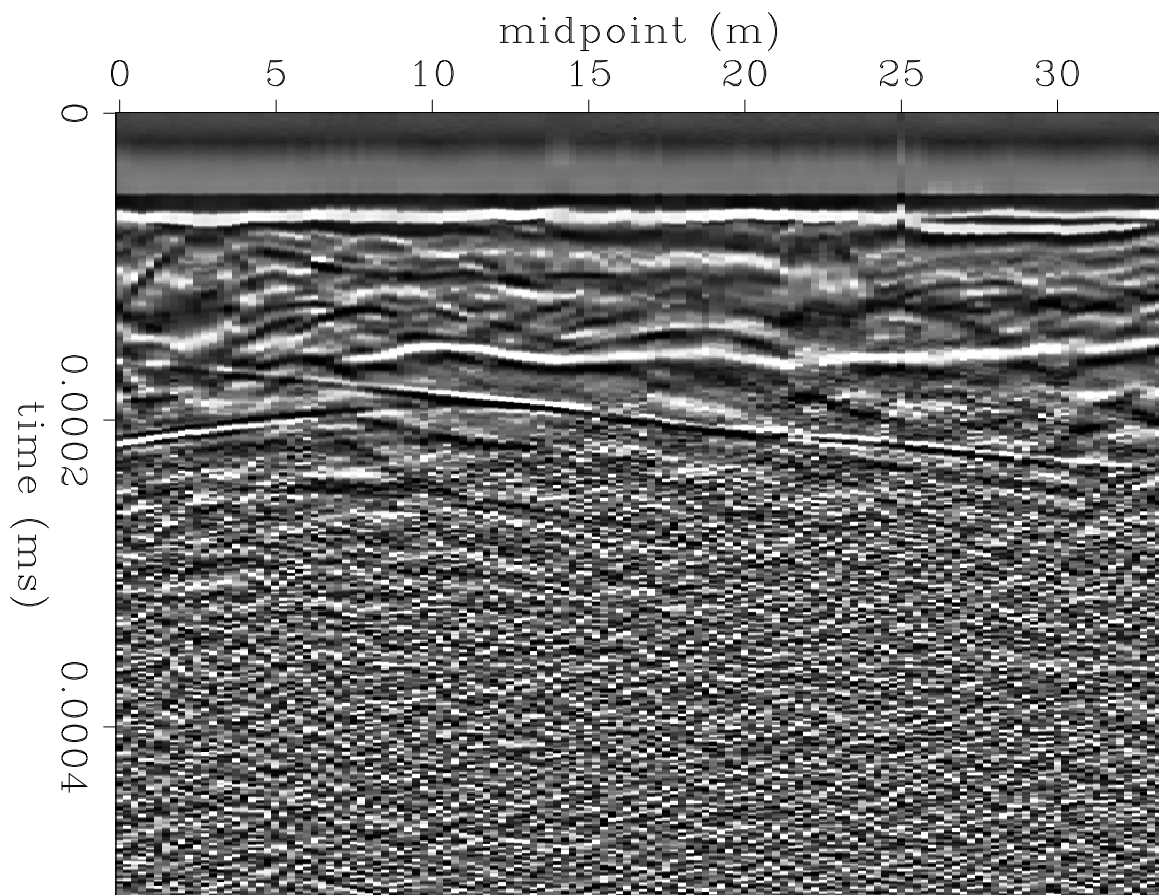
```
in="stdin"
expands to in="stdin"
esize=4
n1=640 n2=134 n3=1                85760 elem          343040 bytes
d1=8e-07      d2=0.25 d3=1?
o1=0    o2=0    o3=0?
label1=time (ms)
label2=midpoint (m)
```

History of data Collected by Ran Bachrach's MSU class (Spring 2000).

Preprocessing None

Proprietary Considerations None, but acknowledge Ran if possible.

¹**email:** james@sep.stanford.edu



GPR A1

Figure 1: First line (A1). `michigan-gpr-gprA1` [ER]

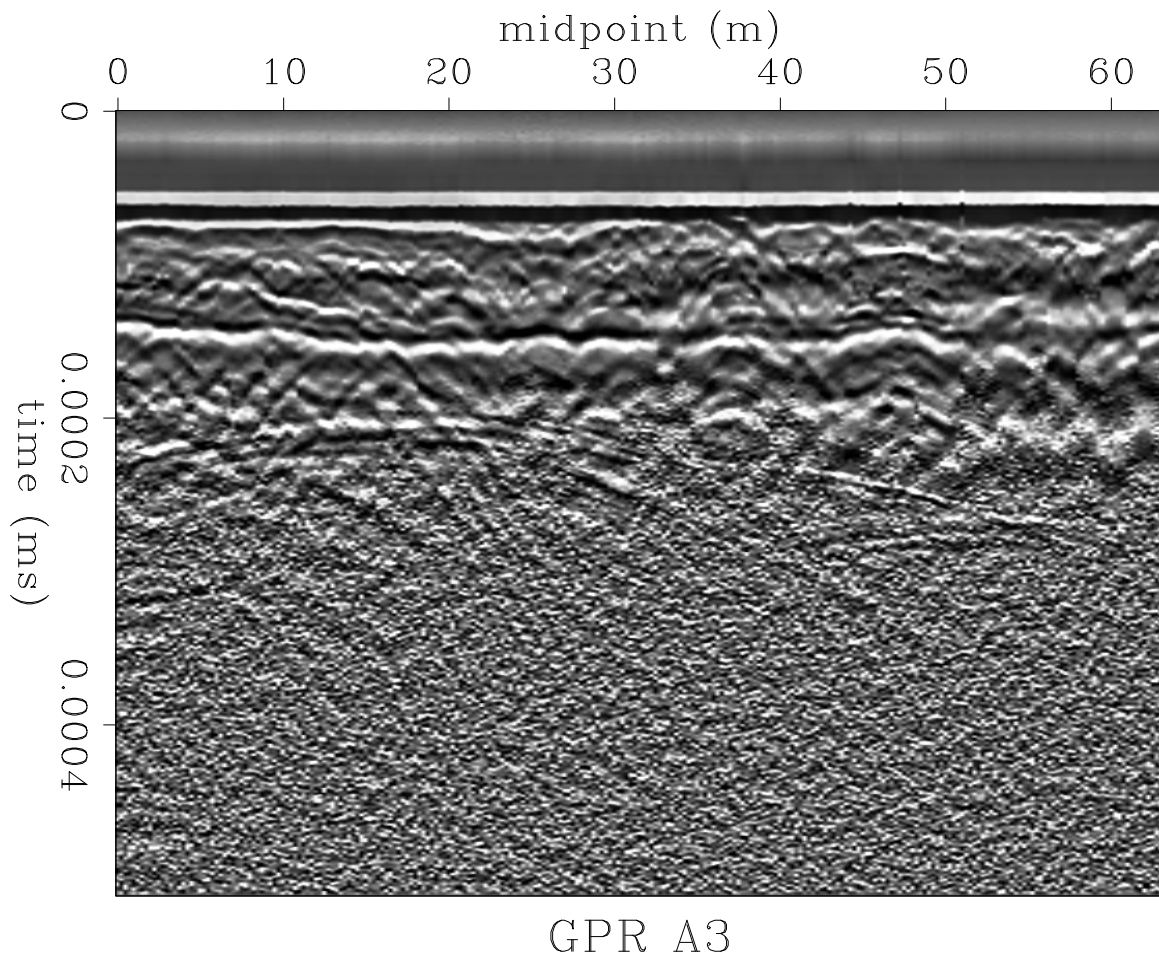


Figure 2: Second line (A3). `michigan-gpr-gprA3` [ER]

