

# Ultra-shallow 3-D dataset recorded at Moss Landings, California

James Rickett<sup>1</sup>

## ABSTRACT

Small 3-D dataset recorded on the beach at Moss Landings, CA. Water-table is clearly visible. Other layers are also visible in supergathers due to exceptional fold.

## MOSS LANDINGS ULTRA-SHALLOW 3-D DATASET

**Raw Data** /net/kana/data/mosslanding3d/Shallow.HH

**Usage** High resolution imaging: (Rickett and Bachrach, 1998); testing 3-D processing routines; lab for Biondo's class

**Geometry**

```
-----
                ***** Shallow.HH *****
          4 -esize           Synched           data_format-xdr_float
-----
n1=4096                o1=-0.005000         d1=0.000031         label1=time
n2=1334                o2=0.000000         d2=1.000000         label2=trace number
Data: in=/net/kana/data/mosslanding3d/Shallow.HH@
      1334 elements,      21856256 bytes in data file
-----
keynumber=1           keytype=scalar_float       keyname=ffid
keynumber=2           keytype=scalar_float       keyname=s_x
keynumber=3           keytype=scalar_float       keyname=s_y
keynumber=4           keytype=scalar_float       keyname=pings
keynumber=5           keytype=scalar_float       keyname=channel
keynumber=6           keytype=scalar_float       keyname=g_x
keynumber=7           keytype=scalar_float       keyname=g_y
keynumber=8           keytype=scalar_float       keyname=cmp_x
keynumber=9           keytype=scalar_float       keyname=cmp_y
keynumber=10          keytype=scalar_float       keyname=off_x
keynumber=11          keytype=scalar_float       keyname=off_y
keynumber=12          keytype=scalar_float       keyname=offset
n2=1334                o2=0.000000         d2=1.000000         label2=trace number
```

<sup>1</sup>email: james@sep.stanford.edu

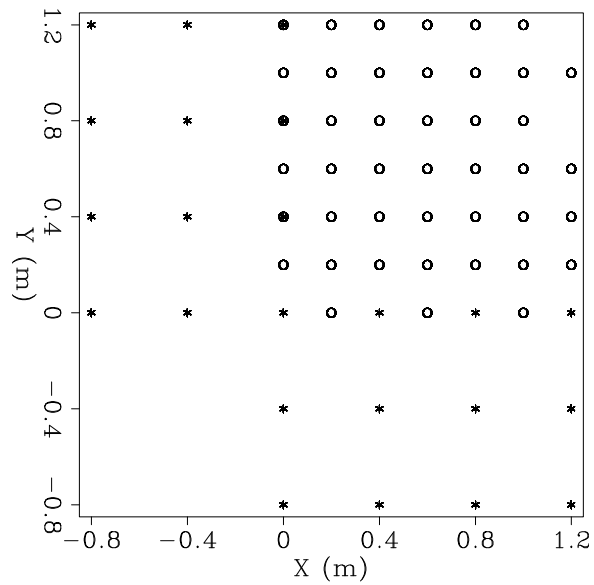
Headers in=/net/kana/data/mosslanding3d/Shallow.HH@@@  
 16008 elements, 64032 bytes in data file

**History of Data** Recorded by Bachrach, Rickett and Lynds, December 1997

**Preprocessing** None

**Proprietary Considerations** None

Figure 1: Geometry  
 mosslanding3d-geom [ER]



## REFERENCES

Rickett, J., and Bachrach, R., 1998, Imaging the very near surface with a high-resolution 3-D seismic survey: SEP-97, 131-136.

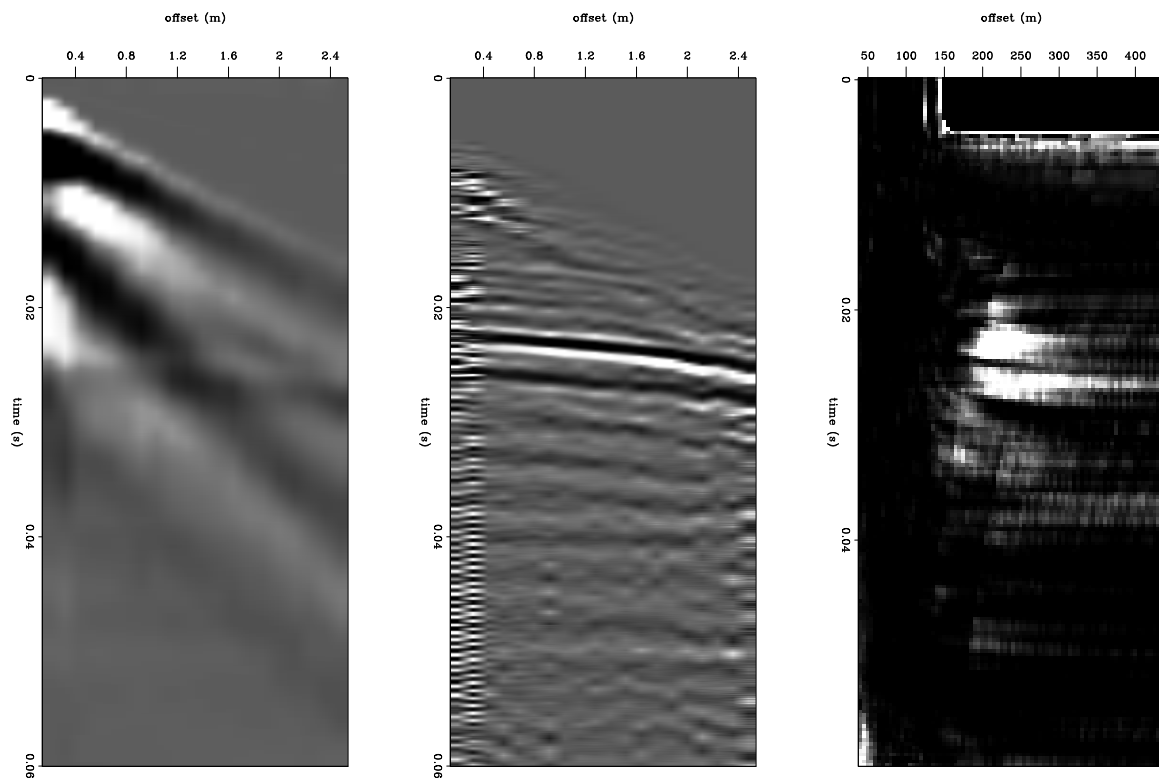


Figure 2: Super-gather of dataset `mosslanding3d-sgather` [NR]

