

Unocal salt dome

*Carmen B. Mora*¹

ABSTRACT

This 3-D reflection seismic data from offshore Louisiana shows a single salt diapir. Two dataset are available which are the stacked and the migrated versions of the data. The 3-D Stack data was provided to SEP by Unocal. In this dataset the first dimension is in-line, the second dimension is cross-line and the third dimension is time. The top left corner of the data (increasing cross-line, decreasing in-lines) is blank meaning that no seismic data was acquired there. The 3-D Migrated data was provided by 3DGeo Development. The dimensions are transposed compared to the stack version: first dimension is depth, second dimension is in-line and the third dimension is cross-line.

¹**email:** cmora@sep.stanford.edu

3-D STACK DATA

Raw Data**Velocity Model****Stack** /data/oldq2/Salt_dome/salt.T**Zero-offset Migration****Usage****Geometry**

```
salt.T:  
in="/q2/Salt_dome/salt.T@"  
expands to in="/q2/Salt_dome/salt.T@"  
esize=1  
n1=455 n2=300 n3=370 n4=1      50505000 elem      50505000 bytes  
d1=110 d2=110 d3=80 d4=1  
o1=0 o2=0 o3=0 o4=0
```

Problem**History of Data** Donated to SEP by Unocal.**Preprocessing****Proprietary Considerations**

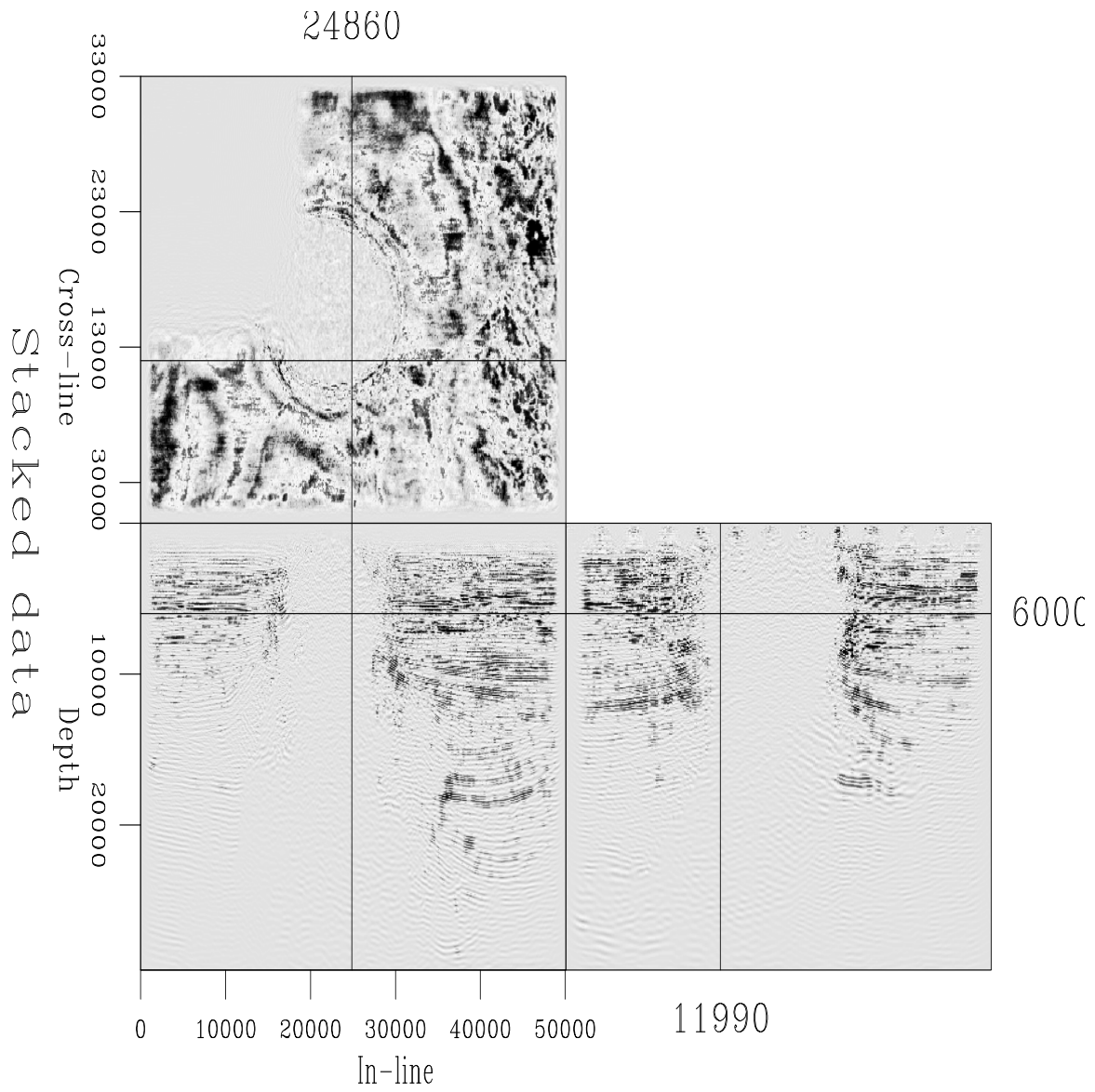


Figure 1: Depth, In-line and cross-line slices from 3-D Stack data `unocal-salt-stack` [ER]

3-D MIGRATED DATA

Raw Data**Velocity Model****Stack****Zero-offset Migration** /data/oldq2/Salt_dome/mig_salt_transp.T**Usage****Geometry**

```
mig_salt_transp.T:  
in="/q2/Salt_dome/DATA_mig_salt_transp.T"  
expands to in="/q2/Salt_dome/DATA_mig_salt_transp.T"  
esize=1  
n1=740 n2=455 n3=300 101010000 elem 101010000 bytes  
d1=40 d2=110 d3=110  
o1=0 o2=0 o3=0  
label1=Depth  
label2=In-line  
label3=Cross-line
```

Problem**History of Data** Donated to SEP by 3DGeo Development.

A README file in the data directory stays:

The stacked dataset is provided courtesy of Unocal.

The migrated dataset is provided courtesy of 3DGeo Development.

The dataset was migrated using MCTMIG (tm) without any acquisition balancing.

Preprocessing**Proprietary Considerations**

REFERENCES

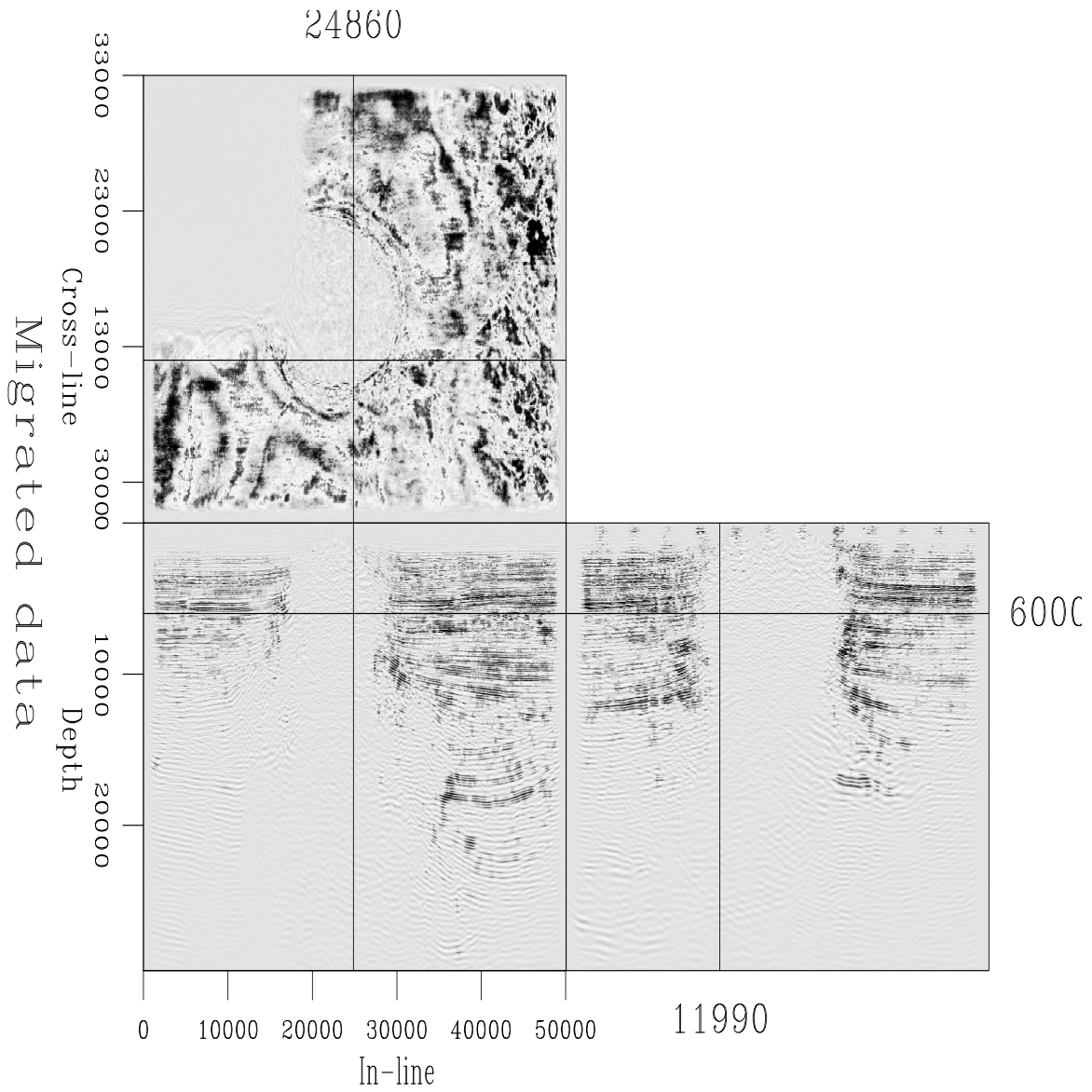


Figure 2: Depth, In-line and cross-line slices from 3-D Migrated data unocal-salt-mig [ER]

