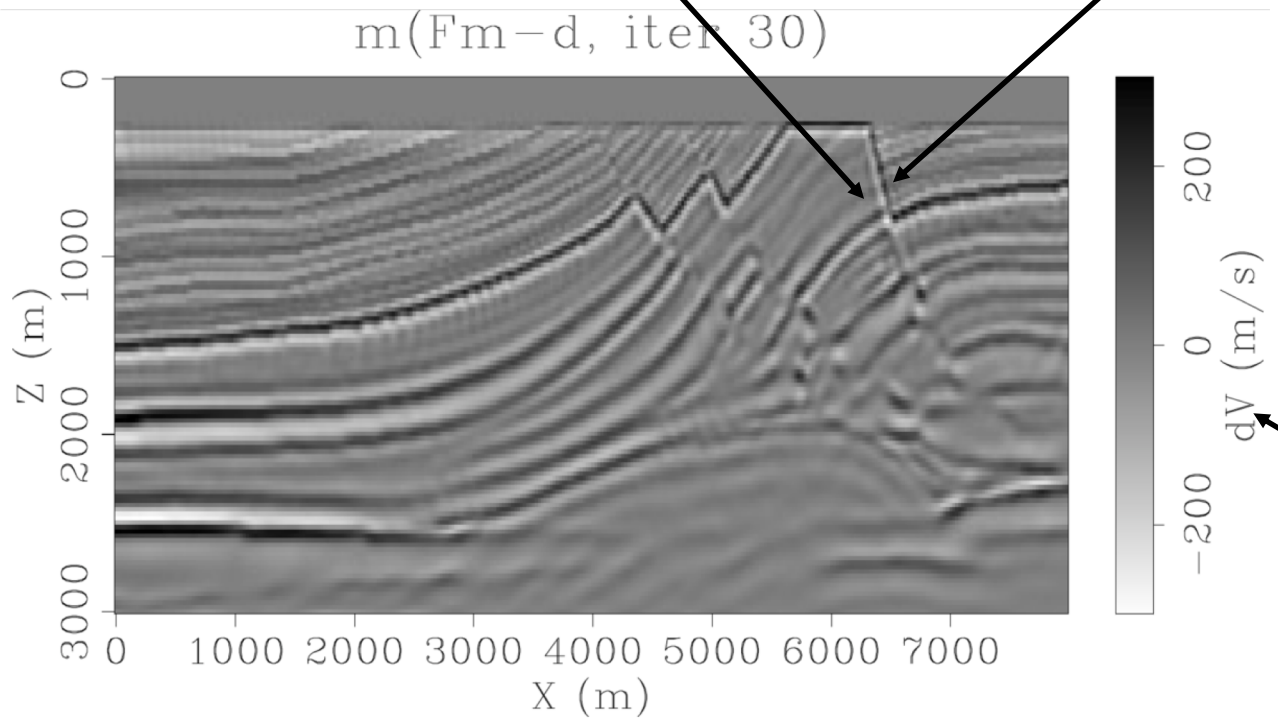


I see the causal "ghost" you are eliminating

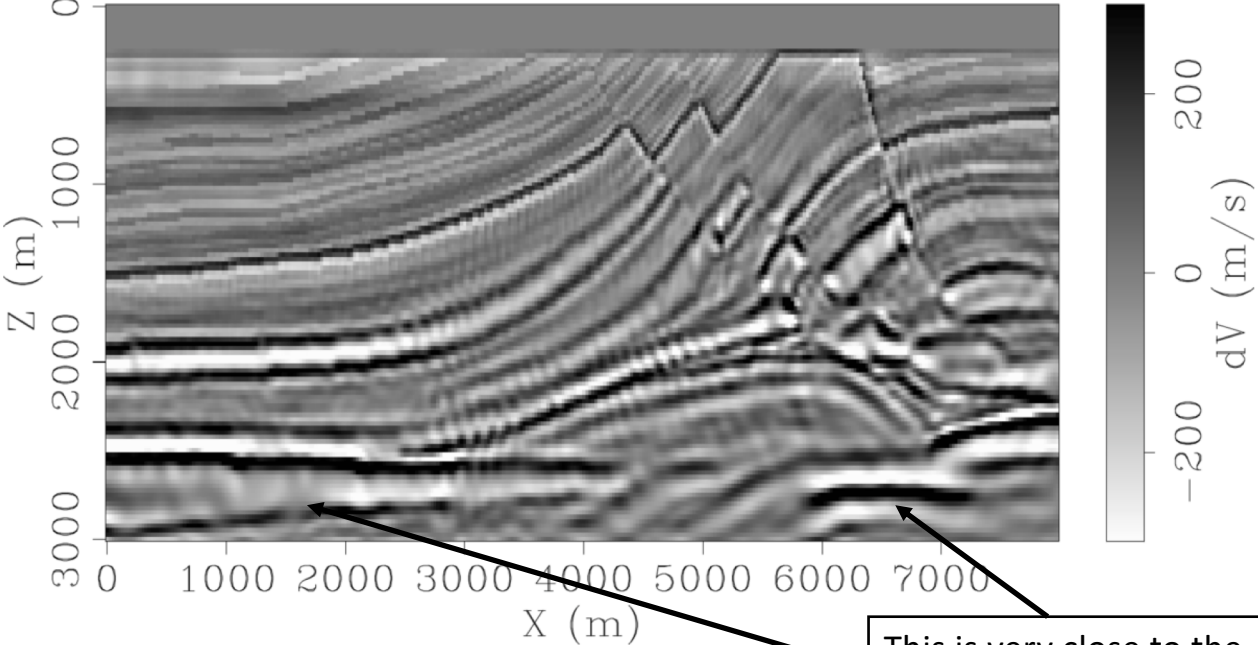
There is also a non causal ghost, right?



dV in meters/second.  
Reflectivity is  $dI/2I$   
Or  $(dV/V+d\rho/\rho)/2$   
Are you assuming that  $d\rho$  is zero and the  $V$  in the denominator can be dropped?

Are you re-estimating A and m every iteration? If so, are you showing only m but could you also show A?

$m(A(Fm-d), \text{iter } 30)$



This is very close to the bottom. Edge effects?